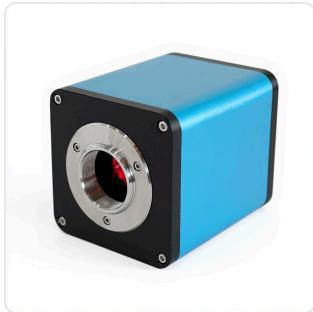


DATASHEET · MICROSCOPY

12MP HDMI USB Mode Real Auto Focus CMOS Microscope Camera with EDF & Measurement Functions.

SKU MCX-0051 Spec v1 Rev. 2026-07-11

DATASHEET · P
MCX
Rev 2026



PRODUCT FAMILY
ANIMAL MODEL
APPLICATION
COUNTRY OF ORIGIN
MFG. STANDARD
LOT TRACEABLE **No**
VERIFIED **Spec v1 · 2026-07-11**

PRODUCT SPECIFICATIONS

FROM PUBLISHED PROD

| | | | |
|------------------|---|-----------------------|--------------------|
| AUTOMATION LEVEL | semi-automated | PRODUCT TYPE | Microscope |
| MICROSCOPE TYPE | General Purpose | APPLICATION | General Laboratory |
| SKILL LEVEL | Entry Level | BRAND | ConductScience |
| RESEARCH DOMAIN | Analytical Chemistry, Cell Biology, Histopathology, Materials Science, Microbiology | DIMENSIONS L×W×H (MM) | 4.9 × 6.6 × 6.6 |
| WEIGHT (KG) | 1.9 | AVAILABILITY | In stock |

BILL OF MATERIALS · 1 LINE ITEMS

BASE CONF

| QTY | ITEM | SKU |
|-----|--|-----|
| 1 | 12MP HDMI USB Mode Real Auto Focus CMOS Microscope Camera with EDF & Measurement Functions | MCX |



Scope.

INFO@CONDUCTSCIENCE.COM CONDUCTSCIENCE.COM

MCX-0051 · DATASH

DATASHEET · MICROSCOPY

12MP HDMI USB Mode Real Auto Focus CMOS Microscope Camera with EDF & Measurement Functions.

SKU MCX-0051 Spec v1 Rev. 2026-07-11

DATASHEET · P
MCX
Rev 2026

BILL OF MATERIALS · EXTENDED ATTRIBUTES

| ITEM |
|--|
| 12MP HDMI USB Mode Real Auto Focus CMOS Microscope Camera with EDF & Measurement Functions |

MATERIALS REFERENCE

0 MATERIAL

| CODE | DESCRIPTION | PROPERTIES | USED IN |
|------|-------------|------------|---------|
|------|-------------|------------|---------|

Cross-reference.

DATASHEET · MICROSCOPY

12MP HDMI USB Mode Real Auto Focus CMOS Microscope Camera with EDF & Measurement Functions.

SKU MCX-0051 Spec v1 Rev. 2026-07-11

DATASHEET · P
MCX-
Rev 2026

OPERATING & STERILIZATION ENVELOPES

CONDITIONS, CYCLES, COMI

OPERATING

TEMPERATURE

HUMIDITY

PRESSURE

STORAGE

TEMPERATURE

HUMIDITY

ORIENTATION

STERILIZATION & CLEANING

AUTOCLAVE

GAMMA

AVOID

ETO

WIPE

ANIMAL COMPATIBILITY

BY SPECIES

NOTES

USE & S

| SPECIES | BODY WEIGHT | CHAMBER FIT |
|---------|-------------|-------------|
|---------|-------------|-------------|

CONTINUOUSLY VERIFIED · SPEC V1
 Specifications verified against current published product data. Verified 2026-07-11 · Since 2026-07-11.

Cite: ConductScience MCX-0051, Spec v1, 2026-07-11. conductscience.com/lab/12mp-hdmi-usb-mode-real-auto-focus-cmos-microscope-camera

INFO@CONDUCTSCIENCE.COM CONDUCTSCIENCE.COM

MCX-0051 · DATASH