

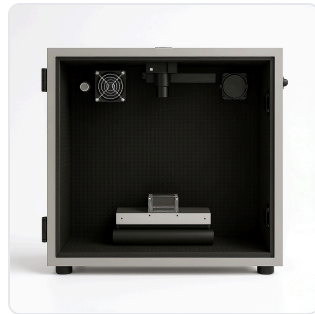
DATASHEET · BEHAVIORAL MAZES

Acoustic Startle Chamber.

SKU ME-5821/5822/5823/5824/5825/5826 Spec v1 Rev. 2026-06-23

DATASHEET · P
ME-5821/5822/5823/5824/5

Rev 2026



PRODUCT FAMILY
ANIMAL MODEL
APPLICATION
COUNTRY OF ORIGIN
MFG. STANDARD
LOT TRACEABLE **No**
VERIFIED **Spec v1 · 2026-06-23**

PRODUCT SPECIFICATIONS

FROM PUBLISHED PROD

PRODUCT TYPE	variable	SET OF	1 mouse, 1 rat, 2 mouse, 2 rat, 4 mouse, 4 rat
SPEAKER_FREQUENCY_RANGE	100-20,000 Hz	SPEAKER_INTENSITY_RANGE	1-120 dB
SHOCK_CURRENT_RANGE	0.1-4.0 mA in 0.1 mA steps	SHOCK_CURRENT_TYPE	DC Current
CHANNELS	Two independent channels	MOUSE_INTERIOR_DIMENSIONS	L x W x H (cm): 6.04 x 6.19 x 4.
MOUSE_BASE_DIMENSIONS	L x W x H (cm): 25.4 x 8.89 x 0.318	MOUSE_ROD_SPACING	0.795 cm apart
RAT_SMALL_INTERIOR_DIMENSIONS	L x W x H (cm): 16.5 x 6.09 x 5.08	RAT_SMALL_BASE_DIMENSIONS	L x W x H (cm): 25.4 x 8.89 x 0.
RAT_SMALL_ROD_SPACING	0.978 cm apart	RAT_LARGE_INTERIOR_DIMENSIONS	L x W x H (cm): 16.5 x 8.1 x 9.1
RAT_LARGE_BASE_DIMENSIONS	L x W x H (cm): 25.4 x 8.89 x 0.318	RAT_LARGE_ROD_SPACING	1.4 cm apart
SIDE_ROD_DIAMETER	0.318 cm	BOTTOM_ROD_DIAMETER	0.318 cm
BOTTOM_ROD_DIAMETER	0.47 cm	WHITE_NOISE_GENERATION	Included
SOUND_DETECTOR	Hz detector included	LIGHTING	Dual visible and IR light bulb
TRANSDUCER	converts vertical movement to voltage signal	REMOVABLE_GRID	Yes
AIRPUFF_MODULE_PRICE	\$890	SOFTWARE_INTEGRATION	Neuralynx, Ethovision Integration and Email integration
BEHAVIORAL_CONSTRUCT	Startle reflex, Prepulse inhibition, Fear-potentiated startle, Startle habituation, Sensorimotor gating	AUTOMATION_LEVEL	semi-automated
MATERIAL	Metal	CAPACITY	0 to 500 grams
	0 to 500 grams (animal capacity)	RESEARCH_DOMAIN	Anxiety and Depression, Behavior Pharmacology, Learning and Me



Motor Function, Neurodegenera
Neuroscience

SPECIES

Mouse Rat

COMPATIBLE TRACKING ConductVision

INFO@CONDUCTSCIENCE.COM

CONDUCTSCIENCE.COM

ME-5821/5822/5823/5824/5825/5826 · DATASH

DATASHEET · BEHAVIORAL MAZES

Acoustic Startle Chamber.

SKU ME-5821/5822/5823/5824/5825/5826 Spec v1 Rev. 2026-06-23

DATASHEET · P
ME-5821/5822/5823/5824/5
Rev 2026

BILL OF MATERIALS · EXTENDED ATTRIBUTES

ITEM
Acoustic Startle Chamber

MATERIALS REFERENCE

0 MATERIAL

CODE	DESCRIPTION	PROPERTIES	USED IN
------	-------------	------------	---------

Cross-reference.

INFO@CONDUCTSCIENCE.COM

CONDUCTSCIENCE.COM

ME-5821/5822/5823/5824/5825/5826 · DATASH

DATASHEET · BEHAVIORAL MAZES

Acoustic Startle Chamber.

SKU ME-5821/5822/5823/5824/5825/5826 Spec v1 Rev. 2026-06-23

DATASHEET · P
ME-5821/5822/5823/5824/5
Rev 2026

OPERATING & STERILIZATION ENVELOPES

CONDITIONS, CYCLES, COMI

OPERATING

TEMPERATURE

HUMIDITY

PRESSURE

STORAGE

TEMPERATURE

HUMIDITY

ORIENTATION

STERILIZATION & CLEANING

AUTOCLAVE

GAMMA

AVOID

ETO

WIPE

ANIMAL COMPATIBILITY

BY SPECIES

NOTES

USE & S

SPECIES	BODY WEIGHT	CHAMBER FIT
---------	-------------	-------------

Specifications verified against current published product data. Verified 2026-06-23 · Since 2026-06-23.

Cite: ConductScience ME-5821/5822/5823/5824/5825/5826, Spec v1, 2026-06-23. conductscience.com/lab/acoustic-startle-chamber

INFO@CONDUCTSCIENCE.COM CONDUCTSCIENCE.COM

ME-5821/5822/5823/5824/5825/5826 · DATASH