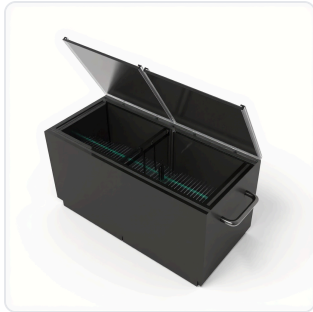


DATASHEET · BEHAVIORAL MAZES

Active/Passive Avoidance Shuttle Box.

SKU ME-6001/6002 Spec v1 Rev. 2026-06-23

DATASHEET · P
ME-6001/
 Rev 2026



PRODUCT FAMILY
 ANIMAL MODEL
 APPLICATION
 COUNTRY OF ORIGIN
 MFG. STANDARD
 LOT TRACEABLE **No**
 VERIFIED **Spec v1 · 2026-06-23**

PRODUCT SPECIFICATIONS

FROM PUBLISHED PROD

PRODUCT TYPE	variable	EXTERIOR_DIMENSIONS	22cm x 22cm x 25cm
EXTERIOR_DIMENSIONS	30cm x 30cm x 30cm	GRID_DIMENSIONS_SMALL	20cm x 20cm
GRID_DIMENSIONS_LARGE	27cm x 27cm	SOUND_FREQUENCY_RANGE	100-40,000Hz
SOUND_INTENSITY_RANGE	15-150dB	SHOCK_CURRENT_RANGE	0.1-4.0mA
SHOCK_CURRENT_STEPS	0.1mA increments	SHOCK_CURRENT_TYPE	DC Current
AUDIO_CHANNELS	2 independent channels	LIGHT_CONTROLS	2 independent light controls
LIGHT_TYPES	Visible and IR light dual bulb	GRID_TYPE	Removable Grid
SHOCK_GRID_CONTROL	2 Independent	WHITE_NOISE_GENERATION	Included in default Software
BEHAVIORAL CONSTRUCT	active avoidance, passive avoidance, aversive learning, fear conditioning, associative learning, memory consolidation, discrimination learning, escape learning	AUTOMATION LEVEL	semi-automated
MATERIAL	Acrylic	COLOR	Black, White
DIMENSIONS	18cm / 25cm x 18cm / 25cm x 20cm / 25cm	RESEARCH DOMAIN	Aging Research, Anxiety and Depression, Behavioral Pharmac Learning and Memory, Neurodegeneration, Neuroscien
SPECIES	Mouse, Rat	COMPATIBLE TRACKING SOFTWARE	ConductVision
DIMENSIONS LxWxH (MM)	43.2 x 38.0 x 27.9	WEIGHT (KG)	21.0

Chat with us

In stock

Scope:

QTY ITEM

SKU

INFO@CONDUCTSCIENCE.COM CONDUCTSCIENCE.COM

ME-6001/ 6002 · DATASH

DATASHEET · BEHAVIORAL MAZES

Active/Passive Avoidance Shuttle Box.

SKU ME-6001/6002 Spec v1 Rev. 2026-06-23

DATASHEET · P

ME-6001/

Rev 2026

BILL OF MATERIALS · EXTENDED ATTRIBUTES

ITEM

Active/Passive Avoidance Shuttle Box

MATERIALS REFERENCE

0 MATERIAL

CODE

DESCRIPTION

PROPERTIES

USED IN

Cross-reference.

DATASHEET · BEHAVIORAL MAZES

Active/Passive Avoidance Shuttle Box.

SKU ME-6001/6002 Spec v1 Rev. 2026-06-23

DATASHEET · P

ME-6001/

Rev 2026

OPERATING & STERILIZATION ENVELOPES

CONDITIONS, CYCLES, COMI

OPERATING

TEMPERATURE

HUMIDITY

PRESSURE

STORAGE

TEMPERATURE

HUMIDITY

ORIENTATION

STERILIZATION & CLEANING

AUTOCLAVE

GAMMA

AVOID

ETO

WIPE

ANIMAL COMPATIBILITY

BY SPECIES

NOTES

USE & S

SPECIES	BODY WEIGHT	CHAMBER FIT
---------	-------------	-------------

Specifications verified against current published product data. Verified 2026-06-23 · Since 2026-06-23.

Cite: ConductScience ME-6001/ 6002, Spec v1, 2026-06-23. conductscience.com/lab/active-passive-avoidance-shuttle-box

INFO@CONDUCTSCIENCE.COM CONDUCTSCIENCE.COM

ME-6001/ 6002 · DATASH