

DATASHEET · BEHAVIORAL MAZES

Aron's Test.

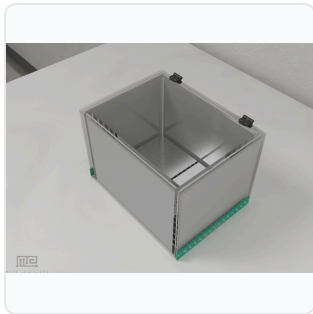
SKU CS-958363 Spec v1 Rev. 2026-07-09

DATASHEET · P

CS-95

Rev 2026

PREVIEW — FIELDS F



PRODUCT FAMILY
 ANIMAL MODEL
 APPLICATION
 COUNTRY OF ORIGIN
 MFG. STANDARD
 LOT TRACEABLE **No**
 VERIFIED **Spec v1 · 2026-07-09**

PRODUCT SPECIFICATIONS

FROM PUBLISHED PROD

PRODUCT TYPE	variable	PLATE_DIMENSIONS	8 × 11 cm each
PLATE_GAP	4 mm	NUMBER_OF_PLATES	4
SHOCK_INTENSITY_RANGE	0 to 3 mA	SHOCK_DURATION_RANGE	0 to 10 seconds
PULSE_TYPE	square pulses	HABITUATION_PERIOD	15 seconds
TEST_DURATION	60 seconds	RECOMMENDED_MOUSE_WEIGHT	20 ± 2 g
RECOMMENDED_GROUP_SIZE	8-12 mice	HOUSING_TEMPERATURE	21 ± 1°C
HOUSING_HUMIDITY	50%	LIGHT_CYCLE	12:12 light/dark
SPECIES	Mouse, Rat	MATERIAL	Perspex, Steel, white plastic
COLOR	White	DIMENSIONS	25 cm x 18 cm x 16 cm
COMPATIBLE TRACKING SOFTWARE	ConductVision	DIMENSIONS L×W×H (MM)	65.0 × 36.0 × 27.0
WEIGHT (KG)	6.06	AVAILABILITY	In stock

BILL OF MATERIALS · 1 LINE ITEMS

BASE CONF

QTY	ITEM	SKU
1	Aron's Test	CS-958363

Scope.

INFO@CONDUCTSCIENCE.COM CONDUCTSCIENCE.COM

CS-958363 · DATASH

DATASHEET · BEHAVIORAL MAZES

Aron's Test.

SKU CS-958363 Spec v1 Rev. 2026-07-09

DATASHEET · P

CS-95

Rev 2026

PREVIEW — FIELDS F

BILL OF MATERIALS · EXTENDED ATTRIBUTES

ITEM

Aron's Test

MATERIALS REFERENCE

0 MATERIAL

CODE

DESCRIPTION

PROPERTIES

USED IN

Cross-reference.

DATASHEET · BEHAVIORAL MAZES

Aron's Test.

SKU CS-958363 Spec v1 Rev. 2026-07-09

DATASHEET · P

CS-95

Rev 2026

PREVIEW — FIELDS F

OPERATING & STERILIZATION ENVELOPES

CONDITIONS, CYCLES, COMI

OPERATING

TEMPERATURE

HUMIDITY

PRESSURE

STORAGE

TEMPERATURE

HUMIDITY

ORIENTATION

STERILIZATION & CLEANING

AUTOCLAVE

GAMMA

AVOID

ETO

WIPE

ANIMAL COMPATIBILITY

BY SPECIES

NOTES

USE & S

SPECIES	BODY WEIGHT	CHAMBER FIT
---------	-------------	-------------

Specifications verified against current published product data. Verified 2026-07-09 · Since 2026-07-09.

Cite: ConductScience CS-958363, Spec v1, 2026-07-09. conductscience.com/lab/arons-test

INFO@CONDUCTSCIENCE.COM CONDUCTSCIENCE.COM

CS-958363 · DATASH