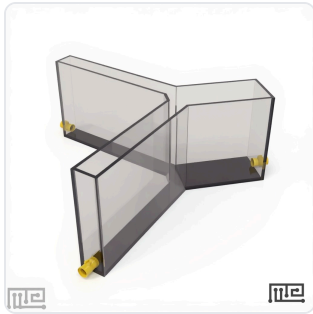


DATASHEET · AUTOMATED MAZES

# Automated Avoidance Zebrafish Y-Maze.

SKU ME-4884 Spec v1 Rev. 2026-06-30

DATASHEET · P  
**ME-**  
Rev 2026



PRODUCT FAMILY  
ANIMAL MODEL  
APPLICATION  
COUNTRY OF ORIGIN  
MFG. STANDARD  
LOT TRACEABLE **No**  
VERIFIED **Spec v1 · 2026-06-30**

PRODUCT SPECIFICATIONS

FROM PUBLISHED PRODUCT

SOUND_FREQUENCY_RANGE	100-20,000Hz	SOUND_VOLUME_RANGE	1-100
CURRENT_LEVEL_RANGE	0.1-4.0 mA	CURRENT_STEP	0.1 mA
SHOCK_CURRENT_DC	0.12 mA	SHOCK_DURATION	50- ms
SHOCK_FREQUENCY	10 Hz	TRIAL_TIME_LIMIT	15 seconds
CONNECTIVITY	USB (RS- 232)	SOFTWARE	Maze Engineers Conduct Software
DELIVERY_TIME	6-8 weeks	MAZE_TYPE	Y-maze
NUMBER_OF_ARMS	3	BEHAVIORAL CONSTRUCT	Avoidance Learning, Associative Learning, Spatial Memory, Fear Conditioning, Operant Conditioning
AUTOMATION LEVEL	fully-automated	MATERIAL	steel mesh
COLOR	gray, Red	POWER/VOLTAGE	DC: 5V, AC: 2.5V
SPECIES	Zebrafish	DISPLAY TYPE	LCD
RESEARCH DOMAIN	Anxiety and Depression, Behavioral Pharmacology, Developmental Biology, Learning and Memory, Neuroscience, Toxicology	COMPATIBLE TRACKING SOFTWARE	ConductVision
DIMENSIONS LxWxH (MM)	43.2 x 38.0 x 27.9	WEIGHT (KG)	21.0
AVAILABILITY	In stock		

Chat with us

QTY	ITEM	SKU
	Scope. Automated Avoidance Zebrafish Y-Maze	ME-4884
INFO@CONDUCTSCIENCE.COM	CONDUCTSCIENCE.COM	ME-4884 · DATASH

DATASHEET · AUTOMATED MAZES

# Automated Avoidance Zebrafish Y-Maze.

SKU ME-4884 Spec v1 Rev. 2026-06-30

DATASHEET · P

**ME-**

Rev 2026

BILL OF MATERIALS · EXTENDED ATTRIBUTES

ITEM

Automated Avoidance Zebrafish Y-Maze

MATERIALS REFERENCE

0 MATERIAL

CODE	DESCRIPTION	PROPERTIES	USED IN
------	-------------	------------	---------

Cross-reference.



DATASHEET · AUTOMATED MAZES

# Automated Avoidance Zebrafish Y-Maze.

SKU ME-4884 Spec v1 Rev. 2026-06-30

DATASHEET · P

**ME-**

Rev 2026

## OPERATING & STERILIZATION ENVELOPES

CONDITIONS, CYCLES, COMI

### OPERATING

TEMPERATURE

HUMIDITY

PRESSURE

### STORAGE

TEMPERATURE

HUMIDITY

ORIENTATION

### STERILIZATION & CLEANING

AUTOCLAVE

GAMMA

AVOID

ETO

WIPE

## ANIMAL COMPATIBILITY

BY SPECIES

## NOTES

USE & S

SPECIES	BODY WEIGHT	CHAMBER FIT
---------	-------------	-------------

Specifications verified against current published product data. Verified 2026-06-30 · Since 2026-06-30.

**Cite:** ConductScience ME-4884, Spec v1, 2026-06-30. [conductscience.com/lab/automated-avoidance-zebrafish-y-maze](https://conductscience.com/lab/automated-avoidance-zebrafish-y-maze)

INFO@CONDUCTSCIENCE.COM    CONDUCTSCIENCE.COM

ME-4884 · DATASH