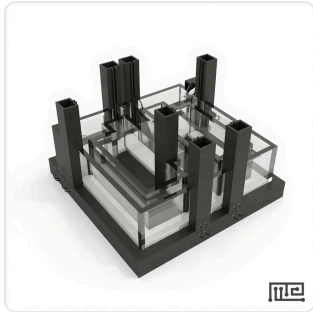


DATASHEET · AUTOMATED MAZES

# Automated Zebrafish T Maze.

SKU ME-4876 Spec v1 Rev. 2026-07-08

DATASHEET · P  
**ME**  
Rev 2026



PRODUCT FAMILY  
ANIMAL MODEL  
APPLICATION  
COUNTRY OF ORIGIN  
MFG. STANDARD  
LOT TRACEABLE **No**  
VERIFIED **Spec v1 · 2026-07-08**

PRODUCT SPECIFICATIONS

FROM PUBLISHED PROD

|                          |   |                              |                                       |
|--------------------------|---|------------------------------|---------------------------------------|
| INTERIOR - WIDTH         | 9 cm  | MAZE - AREAS                 | A1, A2, P1, P2, S0, S12               |
| MAZE - DOORS             | DA1, DA2, DP1, DP2, DS0, DS1, DS2   | MAZE - SENSORS               | MA1, MA2, MP1, MP2, MS0, MS           |
| INTERIOR - WALL - HEIGHT | 10 cm   | INTERIOR_WIDTH               | 9 cm                                  |
| INTERIOR_WALL_HEIGHT     | 10 cm   | ACRYLIC_THICKNESS            | 1/2 inch                              |
| WATER_HEIGHT             | 10 cm   | SENSOR_ARRAY_LENGTH          | 8 cm                                  |
| NUMBER_OF_DOORS          | 7   | NUMBER_OF_SENSORS            | 7                                     |
| MAZE_AREAS               | 6 (S0, S12, A1, A2, P1, P2)   | MAZE_DOORS                   | 7 (DS0, DS1, DS2, DA1, DA2, DP1, DP2) |
| MAZE_SENSORS             | 7 (MS0, MS1, MS2, MA1, MA2, MP1, MP2)   | REWARD_DISPENSERS            | 2                                     |
| WATER_STIRRERS           | 2 (speed adjustable)  | WALL_INSERTS                 | 4 (2 green, 2 red, removable)         |
| FOOD_DELIVERY_LED        | LED light equipped  | SOFTWARE                     | Conduct T - maze                      |
| BEHAVIORAL CONSTRUCT     | spatial learning, spatial memory, choice behavior, navigation, reversal learning, memory consolidation, cognitive flexibility | AUTOMATION LEVEL             | fully - automated                     |
| MATERIAL                 | Clear Acrylic, clear acrylic with 1/2 inch thick acrylic  | SPECIES                      | Zebrafish                             |
| DISPLAY TYPE             | LED   | DIMENSIONS                   | 38 cm x 51 cm                         |
| RESEARCH DOMAIN          | Behavioral Pharmacology, Developmental Biology, Learning & Memory, Neurodegeneration, Neuroscience, Toxicology                | COMPATIBLE TRACKING SOFTWARE | ConductVision                         |

DIMENSIONS L×W×H (MM) **43.2 × 38.0 × 27.9**

WEIGHT (KG) **21.0**

AVAILABILITY **In stock**

[INFO@CONDUCTSCIENCE.COM](mailto:INFO@CONDUCTSCIENCE.COM) [CONDUCTSCIENCE.COM](http://CONDUCTSCIENCE.COM)

ME-4876 · DATASH

DATASHEET · AUTOMATED MAZES

# Automated Zebrafish T Maze.

SKU ME-4876 Spec v1 Rev. 2026-07-08

DATASHEET · P

ME

Rev 2026

## BILL OF MATERIALS · EXTENDED ATTRIBUTES

ITEM

Automated Zebrafish T Maze

## MATERIALS REFERENCE

0 MATERIAL

CODE

DESCRIPTION

PROPERTIES

USED IN

Cross-reference.



DATASHEET · AUTOMATED MAZES

# Automated Zebrafish T Maze.

SKU ME-4876 Spec v1 Rev. 2026-07-08

DATASHEET · P

ME-

Rev 2026

## OPERATING & STERILIZATION ENVELOPES

CONDITIONS, CYCLES, COMI

### OPERATING

TEMPERATURE

HUMIDITY

PRESSURE

### STORAGE

TEMPERATURE

HUMIDITY

ORIENTATION

### STERILIZATION & CLEANING

AUTOCLAVE

GAMMA

AVOID

ETO

WIPE

## ANIMAL COMPATIBILITY

BY SPECIES

## NOTES

USE & S

| SPECIES | BODY WEIGHT | CHAMBER FIT |
|---------|-------------|-------------|
|---------|-------------|-------------|

Specifications verified against current published product data. Verified 2026-07-08 · Since 2026-07-08.

**Cite:** ConductScience ME-4876, Spec v1, 2026-07-08. [conductscience.com/lab/automated-zebrafish-t-maze](https://conductscience.com/lab/automated-zebrafish-t-maze)

INFO@CONDUCTSCIENCE.COM    CONDUCTSCIENCE.COM

ME-4876 · DATASH