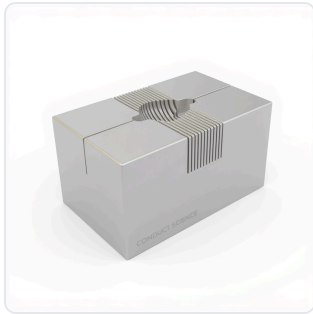


DATASHEET · NEUROSCIENCE MODELS

Matrix Sectioning Blocks (Brain & Heart).

SKU Spec v1 Rev. 2026-07-09

DATASHEET · P
Rev 2026



PRODUCT FAMILY
 ANIMAL MODEL
 APPLICATION
 COUNTRY OF ORIGIN
 MFG. STANDARD
 LOT TRACEABLE **No**
 VERIFIED **Spec v1 · 2026-07-09**

PRODUCT SPECIFICATIONS

FROM PUBLISHED PROD

PRODUCT TYPE	variable	SPECIES	35874
ORIENTATION	36072, 36073	WEIGHT RANGE	36074, 36075, 36076
THICKNESS	36077, 36078	DIMENSIONS LxWxH (MM)	46.5 × 44.0 × 35.5
WEIGHT (KG)	44.02	AVAILABILITY	In stock

BILL OF MATERIALS · 1 LINE ITEMS

BASE CONF

QTY	ITEM	SKU
1	Matrix Sectioning Blocks (Brain & Heart)	—

Scope.

INFO@CONDUCTSCIENCE.COM CONDUCTSCIENCE.COM

· [DATASH](#)

DATASHEET · NEUROSCIENCE MODELS

Matrix Sectioning Blocks (Brain & Heart).

SKU Spec v1 Rev. 2026-07-09

DATASHEET · P
Rev 2026

BILL OF MATERIALS · EXTENDED ATTRIBUTES

ITEM
Matrix Sectioning Blocks (Brain & Heart)

MATERIALS REFERENCE

0 MATERIAL

CODE	DESCRIPTION	PROPERTIES	USED IN
------	-------------	------------	---------

Cross-reference.

DATASHEET · NEUROSCIENCE MODELS

Matrix Sectioning Blocks (Brain & Heart).

SKU Spec v1 Rev. 2026-07-09

DATASHEET · P
Rev 2026

OPERATING & STERILIZATION ENVELOPES

CONDITIONS, CYCLES, COMI

OPERATING

TEMPERATURE _____

HUMIDITY _____

PRESSURE _____

STORAGE

TEMPERATURE _____

HUMIDITY _____

ORIENTATION _____

STERILIZATION & CLEANING

AUTOCLAVE _____

GAMMA _____

AVOID █

ETO _____

WIPE █ _____

ANIMAL COMPATIBILITY

BY SPECIES

NOTES

USE & S

SPECIES	BODY WEIGHT	CHAMBER FIT
---------	-------------	-------------

Specifications verified against current published product data. Verified 2026-07-09 · Since 2026-07-09.

Cite: ConductScience , Spec v1, 2026-07-09. conductscience.com/lab/brain-matrix-coronal-section

INFO@CONDUCTSCIENCE.COM CONDUCTSCIENCE.COM

· DATASH