

DATASHEET · BEHAVIORAL MAZES

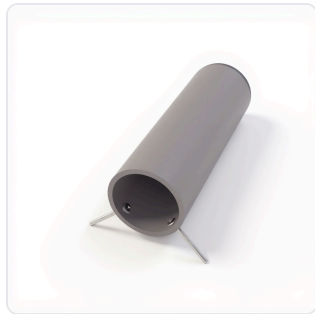
# Burrowing Tube.

SKU CS-958248 Spec v1 Rev. 2026-07-09

DATASHEET · P

**CS-95**

Rev 2026



PRODUCT FAMILY	
ANIMAL MODEL	
APPLICATION	
COUNTRY OF ORIGIN	
MFG. STANDARD	
LOT TRACEABLE	No
VERIFIED	Spec v1 · 2026-07-09

PRODUCT SPECIFICATIONS

FROM PUBLISHED PROD

BEHAVIORAL CONSTRUCT	Spatial Navigation, Motor Coordination, Exploratory Behavior, Anxiety-Related Behavior	AUTOMATION LEVEL	manual
RESEARCH DOMAIN	Aging Research, Anxiety and Depression, Behavioral Pharmacology, Learning and Memory, Motor Function, Neuroscience	SPECIES	Gerbil, Hamster, Mouse, Rat
COMPATIBLE TRACKING SOFTWARE	ConductVision	DIMENSIONS LxWxH (MM)	65.0 × 36.0 × 27.0
WEIGHT (KG)	4.41	AVAILABILITY	In stock

BILL OF MATERIALS · 1 LINE ITEMS

BASE CONF

QTY	ITEM	SKU
1	Burrowing Tube	CS-958248



---

**Scope.**

INFO@CONDUCTSCIENCE.COM    CONDUCTSCIENCE.COM

CS-958248 · DATASH

DATASHEET · BEHAVIORAL MAZES

# Burrowing Tube.

SKU CS-958248 Spec v1 Rev. 2026-07-09

DATASHEET · P

**CS-95**

Rev 2026

## BILL OF MATERIALS · EXTENDED ATTRIBUTES

ITEM

Burrowing Tube

## MATERIALS REFERENCE

0 MATERIAL

CODE

DESCRIPTION

PROPERTIES

USED IN

Cross-reference.



DATASHEET · BEHAVIORAL MAZES

# Burrowing Tube.

SKU CS-958248 Spec v1 Rev. 2026-07-09

DATASHEET · P

**CS-95**

Rev 2026

## OPERATING & STERILIZATION ENVELOPES

CONDITIONS, CYCLES, COM

### OPERATING

TEMPERATURE

HUMIDITY

PRESSURE

### STORAGE

TEMPERATURE

HUMIDITY

ORIENTATION

### STERILIZATION & CLEANING

AUTOCLAVE

GAMMA

AVOID

ETO

WIPE

## ANIMAL COMPATIBILITY

BY SPECIES

## NOTES

USE & S

SPECIES	BODY WEIGHT	CHAMBER FIT
---------	-------------	-------------

Specifications verified against current published product data. Verified 2026-07-09 · Since 2026-07-09.

**Cite:** ConductScience CS-958248, Spec v1, 2026-07-09. [conductscience.com/lab/burrowing-tube](https://conductscience.com/lab/burrowing-tube)

INFO@CONDUCTSCIENCE.COM    CONDUCTSCIENCE.COM

CS-958248 · DATASH