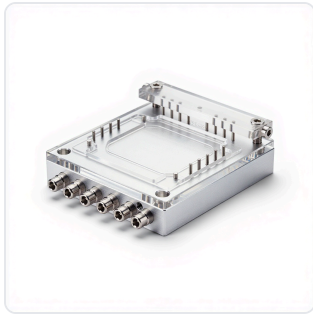


DATASHEET · LAB EQUIPMENT

Chip-Diaphragm-Chip Sandwich Holder.

SKU WHM-0051 Spec v1 Rev. 2026-07-09

DATASHEET · P
WHM
 Rev 2026



PRODUCT FAMILY
 ANIMAL MODEL
 APPLICATION
 COUNTRY OF ORIGIN
 MFG. STANDARD
 LOT TRACEABLE **No**
 VERIFIED **Spec v1 · 2026-07-09**

PRODUCT SPECIFICATIONS

FROM PUBLISHED PROD

CONFIGURATION	Chip-Diaphragm-Chip sandwich	BRAND	ConductScience
RESEARCH DOMAIN	Analytical Chemistry, Cell Biology, Environmental Monitoring, Materials Science, Microbiology, Pharmaceutical QC	DIMENSIONS LxWxH (MM)	80.0 × 50.0 × 30.0
WEIGHT (KG)	0.3	AVAILABILITY	In stock

BILL OF MATERIALS · 1 LINE ITEMS

BASE CONF

QTY	ITEM	SKU
1	Chip-Diaphragm-Chip Sandwich Holder	WHM-0051

Scope.

INFO@CONDUCTSCIENCE.COM CONDUCTSCIENCE.COM

WHM-0051 · DATASH

DATASHEET · LAB EQUIPMENT

Chip-Diaphragm-Chip Sandwich Holder.

SKU WHM-0051 Spec v1 Rev. 2026-07-09

DATASHEET · P

WHM-

Rev 2026

BILL OF MATERIALS · EXTENDED ATTRIBUTES

ITEM

Chip-Diaphragm-Chip Sandwich Holder

MATERIALS REFERENCE

0 MATERIAL

CODE

DESCRIPTION

PROPERTIES

USED IN

Cross-reference.

DATASHEET · LAB EQUIPMENT

Chip-Diaphragm-Chip Sandwich Holder.

SKU WHM-0051 Spec v1 Rev. 2026-07-09

DATASHEET · P

WHM-

Rev 2026

OPERATING & STERILIZATION ENVELOPES

CONDITIONS, CYCLES, COM

OPERATING

TEMPERATURE

HUMIDITY

PRESSURE

STORAGE

TEMPERATURE

HUMIDITY

ORIENTATION

STERILIZATION & CLEANING

AUTOCLAVE

GAMMA

AVOID

ETO

WIPE

ANIMAL COMPATIBILITY

BY SPECIES

NOTES

USE & S

SPECIES	BODY WEIGHT	CHAMBER FIT
---------	-------------	-------------

Specifications verified against current published product data. Verified 2026-07-09 · Since 2026-07-09.

Cite: ConductScience WHM-0051, Spec v1, 2026-07-09. conductscience.com/lab/chip-diaphragm-chip-sandwich-holder

INFO@CONDUCTSCIENCE.COM CONDUCTSCIENCE.COM

WHM-0051 · DATASH