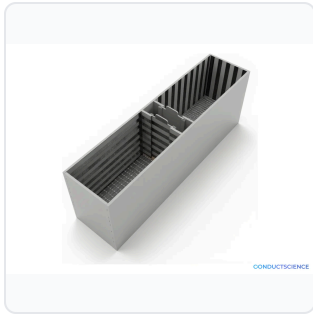


DATASHEET · BEHAVIORAL MAZES

Conditioned Place Preference Stapleton 1979.

DATASHEET · P
CS-95
 Rev 2026

SKU CS-958258 Spec v1 Rev. 2026-07-06



PRODUCT FAMILY
 ANIMAL MODEL
 APPLICATION
 COUNTRY OF ORIGIN
 MFG. STANDARD
 LOT TRACEABLE **No**
 VERIFIED **Spec v1 · 2026-07-06**

PRODUCT SPECIFICATIONS

FROM PUBLISHED PROD

BEHAVIORAL CONSTRUCT	place conditioning, reward learning, environmental preference, associative memory, drug reward, aversion conditioning	AUTOMATION LEVEL	semi-automated
RESEARCH DOMAIN	Addiction Research, Anxiety and Depression, Behavioral Pharmacology, Learning and Memory, Neuroscience, Pain Research	SPECIES	Mouse, Rat
COMPATIBLE TRACKING SOFTWARE	ConductVision	DIMENSIONS L×W×H (MM)	65.0 × 36.0 × 27.0
WEIGHT (KG)	6.06	AVAILABILITY	In stock

BILL OF MATERIALS · 1 LINE ITEMS

BASE CONF

QTY	ITEM	SKU
1	Conditioned Place Preference Stapleton 1979	CS-958258



Scope.

INFO@CONDUCTSCIENCE.COM CONDUCTSCIENCE.COM

CS-958258 · DATASH

DATASHEET · BEHAVIORAL MAZES

Conditioned Place Preference Stapleton 1979.

SKU CS-958258 Spec v1 Rev. 2026-07-06

DATASHEET · P
CS-95
Rev 2026

BILL OF MATERIALS · EXTENDED ATTRIBUTES

ITEM

Conditioned Place Preference Stapleton 1979

MATERIALS REFERENCE

0 MATERIAL

CODE	DESCRIPTION	PROPERTIES	USED IN
------	-------------	------------	---------

Cross-reference.

DATASHEET · BEHAVIORAL MAZES

Conditioned Place Preference Stapleton 1979.

SKU CS-958258 Spec v1 Rev. 2026-07-06

DATASHEET · P
CS-95
Rev 2026

OPERATING & STERILIZATION ENVELOPES

CONDITIONS, CYCLES, COMI

OPERATING

TEMPERATURE

HUMIDITY

PRESSURE

STORAGE

TEMPERATURE

HUMIDITY

ORIENTATION

STERILIZATION & CLEANING

AUTOCLAVE

GAMMA

AVOID

ETO

WIPE

ANIMAL COMPATIBILITY

BY SPECIES

NOTES

USE & S

SPECIES	BODY WEIGHT	CHAMBER FIT
---------	-------------	-------------

Specifications verified against current published product data. Verified 2026-07-06 · Since 2026-07-06.

Cite: ConductScience CS-958258, Spec v1, 2026-07-06. conductscience.com/lab/conditioned-place-preference-stapleton-1979

INFO@CONDUCTSCIENCE.COM CONDUCTSCIENCE.COM

CS-958258 · DATASH