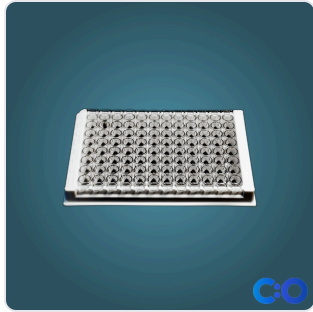


DATASHEET · GENERAL LABWARE

# ConductScience ELISA Plates, 96-Well, High-Binding (Case of 10).

SKU CS-ELISA-96HB-25 Spec v1 Rev. 2026-07-09

DATASHEET · P  
**CS-ELISA-96HB-25**  
 Rev 2026-07-09



PRODUCT FAMILY	
ANIMAL MODEL	
APPLICATION	
COUNTRY OF ORIGIN	
MFG. STANDARD	
LOT TRACEABLE	No
VERIFIED	Spec v1 · 2026-07-09

PRODUCT SPECIFICATIONS

FROM PUBLISHED PRODUCT

AUTOMATION LEVEL	semi-automated	RESEARCH DOMAIN	Clinical Diagnostics, Environmental Monitoring, Food Science, Immunology, Microbiology, Pharmaceutical Quality Control
DIMENSIONS LxWxH (MM)	113.5 x 94.6 x 75.6	WEIGHT (KG)	559.16
AVAILABILITY	In stock		

BILL OF MATERIALS · 1 LINE ITEMS

BASE CONFIGURATION

QTY	ITEM	SKU
1	ConductScience ELISA Plates, 96-Well, High-Binding (Case of 10)	CS-ELISA-96HB-25



---

**Scope.**

INFO@CONDUCTSCIENCE.COM

CONDUCTSCIENCE.COM

CS-ELISA-96HB-25 · DATASH

DATASHEET · GENERAL LABWARE

# ConductScience ELISA Plates, 96-Well, High-Binding (Case of 10).

SKU CS-ELISA-96HB-25 Spec v1 Rev. 2026-07-09

DATASHEET · P  
**CS-ELISA-96HB**  
Rev 2026

## BILL OF MATERIALS · EXTENDED ATTRIBUTES

### ITEM

ConductScience ELISA Plates, 96-Well, High-Binding (Case of 10)

## MATERIALS REFERENCE

0 MATERIALS

CODE	DESCRIPTION	PROPERTIES	USED IN
------	-------------	------------	---------

Cross-reference.



DATASHEET · GENERAL LABWARE

# ConductScience ELISA Plates, 96-Well, High-Binding (Case of 10).

SKU CS-ELISA-96HB-25 Spec v1 Rev. 2026-07-09

DATASHEET · P  
**CS-ELISA-96H**  
Rev 2026

**OPERATING & STERILIZATION ENVELOPES**

CONDITIONS, CYCLES, COM

**OPERATING**

TEMPERATURE .....

HUMIDITY .....

PRESSURE .....

**STORAGE**

TEMPERATURE .....

HUMIDITY .....

ORIENTATION .....

**STERILIZATION & CLEANING**

AUTOCLAVE .....

GAMMA .....

AVOID █

ETO .....

WIPE █ .....

**ANIMAL COMPATIBILITY**

BY SPECIES

**NOTES**

USE & S

SPECIES	BODY WEIGHT	CHAMBER FIT
---------	-------------	-------------

Specifications verified against current published product data. Verified 2026-07-09 · Since 2026-07-09.

**Cite:** ConductScience CS-ELISA-96HB-25, Spec v1, 2026-07-09. [conductscience.com/lab/conductscience-elisa-plates-96-well-high](https://conductscience.com/lab/conductscience-elisa-plates-96-well-high)

INFO@CONDUCTSCIENCE.COM    CONDUCTSCIENCE.COM

CS-ELISA-96HB-25 · DATASH