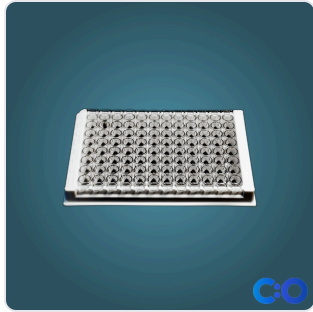


DATASHEET · GENERAL LABWARE

ConductScience ELISA Plates, 96-Well, Medium-Binding (Case of 10).

SKU CS-ELISA-96MB-25 Spec v1 Rev. 2026-07-09

DATASHEET · P
CS-ELISA-96M
 Rev 2026-07-09



PRODUCT FAMILY
 ANIMAL MODEL
 APPLICATION
 COUNTRY OF ORIGIN
 MFG. STANDARD
 LOT TRACEABLE **No**
 VERIFIED **Spec v1 · 2026-07-09**

PRODUCT SPECIFICATIONS

FROM PUBLISHED PROD

AUTOMATION LEVEL	manual	RESEARCH DOMAIN	Analytical Chemistry, Cell Biolog Clinical Diagnostics, Environmer Monitoring, Food Science, Immu Microbiology, Pharmaceutical Q
DIMENSIONS LxWxH (MM)	113.5 × 94.6 × 75.6	WEIGHT (KG)	559.16
AVAILABILITY	In stock		

BILL OF MATERIALS · 1 LINE ITEMS

BASE CONF

QTY	ITEM	SKU
1	ConductScience ELISA Plates, 96-Well, Medium-Binding (Case of 10)	CS-ELISA-96MB-25

Scope.

INFO@CONDUCTSCIENCE.COM

CONDUCTSCIENCE.COM

CS-ELISA-96MB-25 · DATASH

DATASHEET · GENERAL LABWARE

ConductScience ELISA Plates, 96-Well, Medium-Binding (Case of 10).

SKU CS-ELISA-96MB-25 Spec v1 Rev. 2026-07-09

DATASHEET · P
CS-ELISA-96M
Rev 2026

BILL OF MATERIALS · EXTENDED ATTRIBUTES

ITEM
ConductScience ELISA Plates, 96-Well, Medium-Binding (Case of 10)

MATERIALS REFERENCE

0 MATERIAL

CODE	DESCRIPTION	PROPERTIES	USED IN
------	-------------	------------	---------

Cross-reference.

DATASHEET · GENERAL LABWARE

ConductScience ELISA Plates, 96-Well, Medium-Binding (Case of 10).

SKU CS-ELISA-96MB-25 Spec v1 Rev. 2026-07-09

DATASHEET · P
CS-ELISA-96M
 Rev 2026

OPERATING & STERILIZATION ENVELOPES

CONDITIONS, CYCLES, COMI

OPERATING

TEMPERATURE

HUMIDITY

PRESSURE

STORAGE

TEMPERATURE

HUMIDITY

ORIENTATION

STERILIZATION & CLEANING

AUTOCLAVE

GAMMA

AVOID

ETO

WIPE

ANIMAL COMPATIBILITY

BY SPECIES

NOTES

USE & S

SPECIES	BODY WEIGHT	CHAMBER FIT
---------	-------------	-------------

CONTINUOUSLY VERIFIED · SPEC V1
 Specifications verified against current published product data. Verified 2026-07-09 · Since 2026-07-09.

Cite: ConductScience CS-ELISA-96MB-25, Spec v1, 2026-07-09. conductscience.com/lab/conductscience-elisa-plates-96-well-medium-binding

INFO@CONDUCTSCIENCE.COM

CONDUCTSCIENCE.COM

CS-ELISA-96MB-25 · DATASH