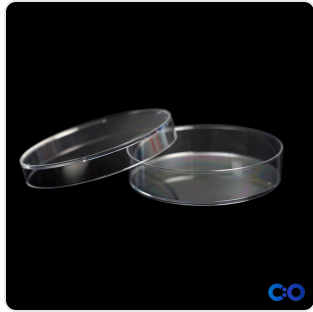


DATASHEET · LAB SUPPLIES

ConductScience Petri Dishes 90mm, Sterile (Case of 10).

SKU CS-PD-90-500 Spec v1 Rev. 2026-07-05

DATASHEET · P
CS-PD-90
 Rev 2026



PRODUCT FAMILY
 ANIMAL MODEL
 APPLICATION
 COUNTRY OF ORIGIN
 MFG. STANDARD
 LOT TRACEABLE **No**
 VERIFIED **Spec v1 · 2026-07-05**

PRODUCT SPECIFICATIONS

FROM PUBLISHED PROD

RESEARCH DOMAIN	Analytical Chemistry, Cell Biology, Environmental Monitoring, Food Science, Microbiology, Pharmaceutical QC	DIMENSIONS LxWxH (MM)	118.2 × 98.5 × 78.8
WEIGHT (KG)	632.15	AVAILABILITY	In stock

BILL OF MATERIALS · 1 LINE ITEMS

BASE CONF

QTY	ITEM	SKU
1	ConductScience Petri Dishes 90mm, Sterile (Case of 10)	CS-PD-90-500



Scope.

INFO@CONDUCTSCIENCE.COM CONDUCTSCIENCE.COM

CS-PD-90-500 · DATASH

DATASHEET · LAB SUPPLIES

ConductScience Petri Dishes 90mm, Sterile (Case of 10).

SKU CS-PD-90-500 Spec v1 Rev. 2026-07-05

DATASHEET · P

CS-PD-90

Rev 2026

BILL OF MATERIALS · EXTENDED ATTRIBUTES

ITEM

ConductScience Petri Dishes 90mm, Sterile (Case of 10)

MATERIALS REFERENCE

0 MATERIALS

CODE	DESCRIPTION	PROPERTIES	USED IN
------	-------------	------------	---------

Cross-reference.

DATASHEET · LAB SUPPLIES

ConductScience Petri Dishes 90mm, Sterile (Case of 10).

SKU CS-PD-90-500 Spec v1 Rev. 2026-07-05

DATASHEET · P
CS-PD-90
Rev 2026

OPERATING & STERILIZATION ENVELOPES

CONDITIONS, CYCLES, COM

OPERATING

TEMPERATURE

HUMIDITY

PRESSURE

STORAGE

TEMPERATURE

HUMIDITY

ORIENTATION

STERILIZATION & CLEANING

AUTOCLAVE

GAMMA

AVOID █

ETO

WIPE █

ANIMAL COMPATIBILITY BY SPECIES

NOTES USE & S

SPECIES	BODY WEIGHT	CHAMBER FIT
---------	-------------	-------------

Specifications verified against current published product data. Verified 2026-07-05 · Since 2026-07-05.

Cite: ConductScience CS-PD-90-500, Spec v1, 2026-07-05. conductscience.com/lab/conductscience-petri-dishes-90mm-sterile

INFO@CONDUCTSCIENCE.COM CONDUCTSCIENCE.COM

CS-PD-90-500 · DATASH