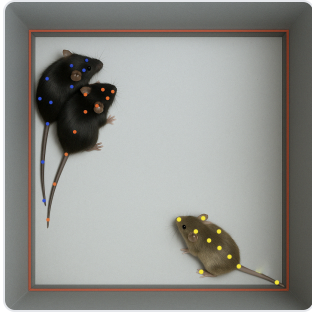


DATASHEET · CONDUCTVISION SOFTWARE

# ConductVision Advanced Rodent Module.

SKU CS-SW-00002 Spec v1 Rev. 2026-07-10

DATASHEET · P  
**CS-SW-0**  
Rev 2026



PRODUCT FAMILY  
ANIMAL MODEL  
APPLICATION  
COUNTRY OF ORIGIN  
MFG. STANDARD  
LOT TRACEABLE **No**  
VERIFIED **Spec v1 · 2026-07-10**

**PRODUCT SPECIFICATIONS**

FROM PUBLISHED PROD

PRODUCT TYPE	variable	LICENSE TERM	1 Year, 5 Year
DIMENSIONS L×W×H (MM)	25.0 × 20.0 × 5.0	WEIGHT (KG)	0.22
AVAILABILITY	In stock		

**BILL OF MATERIALS · 1 LINE ITEMS**

BASE CONF

QTY	ITEM	SKU
1	ConductVision Advanced Rodent Module	CS-SW-00002



---

**Scope.**

INFO@CONDUCTSCIENCE.COM    CONDUCTSCIENCE.COM

CS-SW-00002 · DATASH

DATASHEET · CONDUCTVISION SOFTWARE

# ConductVision Advanced Rodent Module.

SKU CS-SW-00002 Spec v1 Rev. 2026-07-10

DATASHEET · P

**CS-SW-0**

Rev 2026

## BILL OF MATERIALS · EXTENDED ATTRIBUTES

ITEM

ConductVision Advanced Rodent Module

## MATERIALS REFERENCE

0 MATERIAL

CODE

DESCRIPTION

PROPERTIES

USED IN

Cross-reference.



DATASHEET · CONDUCTVISION SOFTWARE

# ConductVision Advanced Rodent Module.

SKU CS-SW-00002 Spec v1 Rev. 2026-07-10

DATASHEET · P

**CS-SW-0**

Rev 2026

## OPERATING & STERILIZATION ENVELOPES

CONDITIONS, CYCLES, COMI

### OPERATING

TEMPERATURE

HUMIDITY

PRESSURE

### STORAGE

TEMPERATURE

HUMIDITY

ORIENTATION

### STERILIZATION & CLEANING

AUTOCLAVE

GAMMA

AVOID

ETO

WIPE

## ANIMAL COMPATIBILITY

BY SPECIES

## NOTES

USE & S

SPECIES	BODY WEIGHT	CHAMBER FIT
---------	-------------	-------------

Specifications verified against current published product data. Verified 2026-07-10 · Since 2026-07-10.

**Cite:** ConductScience CS-SW-00002, Spec v1, 2026-07-10. [conductscience.com/lab/conductvision-advanced-rodent-module](https://conductscience.com/lab/conductvision-advanced-rodent-module)

INFO@CONDUCTSCIENCE.COM    CONDUCTSCIENCE.COM

CS-SW-00002 · DATASH