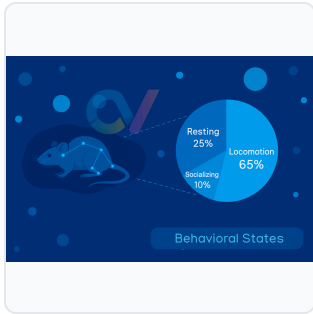


DATASHEET · CONDUCTVISION SOFTWARE

# ConductVision Grooming Analysis Module.

DATASHEET · P  
**CS-SW-0**  
 Rev 2024

SKU CS-SW-00007 Spec v1 Rev. 2026-06-23



PRODUCT FAMILY  
 ANIMAL MODEL  
 APPLICATION  
 COUNTRY OF ORIGIN  
 MFG. STANDARD  
 LOT TRACEABLE **No**  
 VERIFIED **Spec v1 · 2026-06-23**

PRODUCT SPECIFICATIONS

FROM PUBLISHED PROD

PRODUCT TYPE	variable	LICENSE TERM	1 Year, 5 Year
DIMENSIONS L×W×H (MM)	25.0 × 20.0 × 5.0	WEIGHT (KG)	0.22
AVAILABILITY	In stock		

BILL OF MATERIALS · 1 LINE ITEMS

BASE CONF

QTY	ITEM	SKU
1	ConductVision Grooming Analysis Module	CS-SW-00007

---

**Scope.**

INFO@CONDUCTSCIENCE.COM    CONDUCTSCIENCE.COM

CS-SW-00007 · DATASH

DATASHEET · CONDUCTVISION SOFTWARE

# ConductVision Grooming Analysis Module.

SKU CS-SW-00007 Spec v1 Rev. 2026-06-23

DATASHEET · P

**CS-SW-0**

Rev 2026

## BILL OF MATERIALS · EXTENDED ATTRIBUTES

ITEM

ConductVision Grooming Analysis Module

## MATERIALS REFERENCE

0 MATERIAL

CODE

DESCRIPTION

PROPERTIES

USED IN

Cross-reference.



DATASHEET · CONDUCTVISION SOFTWARE

# ConductVision Grooming Analysis Module.

DATASHEET · P

**CS-SW-0**

Rev 2024

SKU CS-SW-00007 Spec v1 Rev. 2026-06-23

## OPERATING & STERILIZATION ENVELOPES

CONDITIONS, CYCLES, COMI

### OPERATING

TEMPERATURE

HUMIDITY

PRESSURE

### STORAGE

TEMPERATURE

HUMIDITY

ORIENTATION

### STERILIZATION & CLEANING

AUTOCLAVE

GAMMA

AVOID

ETO

WIPE

## ANIMAL COMPATIBILITY

BY SPECIES

## NOTES

USE & S

SPECIES

BODY WEIGHT

CHAMBER FIT

Specifications verified against current published product data. Verified 2026-06-23 · Since 2026-06-23.

**Cite:** ConductScience CS-SW-00007, Spec v1, 2026-06-23. [conductscience.com/lab/conductvision-grooming-analysis-module](https://conductscience.com/lab/conductvision-grooming-analysis-module)

INFO@CONDUCTSCIENCE.COM    CONDUCTSCIENCE.COM

CS-SW-00007 · DATASH