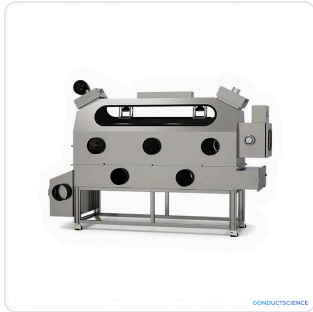


DATASHEET · ISOLATORS

# Duck isolators.

SKU BIO-0077 Spec v1 Rev. 2026-07-10

DATASHEET · P  
**BIO.**  
 Rev 2026



PRODUCT FAMILY  
 ANIMAL MODEL  
 APPLICATION  
 COUNTRY OF ORIGIN  
 MFG. STANDARD  
 LOT TRACEABLE **No**  
 VERIFIED **Spec v1 · 2026-07-10**

PRODUCT SPECIFICATIONS

FROM PUBLISHED PROD

AUTOMATION LEVEL	semi-automated	EXTERNAL SIZE(W*D*H)	2594*812*1820mm
ANIMAL ACTIVITY AREA(W*D*H)	1994*712*800mm	AIR EXCHANGE RATE	≥20 times/h
AIRFLOW VELOCITY	0.1m/s~0.2m/s within the duck living space	FALLING BACTERIA(NUMBERS/UTENSIL/HOUR)	0
FILTER	Pre-filter, Mid-filter, HEPA(H14) filter	NOISE	≤70dB(A)
STANDARD ACCESSORIES	heating lamp, lighting lamp, UV lamp, feeding and drinking system, gloves*10(pairs), temperature and	CONSUMPTION	700W
PACKAGE SIZE(W*D*H)	2845*992*2050mm	BRAND	ConductScience
RESEARCH DOMAIN	Developmental Biology, Environmental Monitoring, Food Science, Immunology, Microbiology, Pharmaceutical QC	SPECIES	Duck
POWER/VOLTAGE	AC220±10%, 50Hz/60Hz(Standard); 110V, 50/60Hz(Optional, external transformer)	WEIGHT	423kg
DIMENSIONS LxWxH (MM)	182.0 × 259.4 × 81.2	WEIGHT (KG)	303.0
AVAILABILITY	In stock		

BILL OF MATERIALS · 1 LINE ITEMS

BASE CONF

QTY	ITEM	SKU
1	Duck isolators	BIO-0077

---

**Scope.**

[INFO@CONDUCTSCIENCE.COM](mailto:INFO@CONDUCTSCIENCE.COM)   [CONDUCTSCIENCE.COM](http://CONDUCTSCIENCE.COM)

BIO-0077 · DATASH

DATASHEET · ISOLATORS

# Duck isolators.

SKU BIO-0077 Spec v1 Rev. 2026-07-10

DATASHEET · P

**BIO.**

Rev 2026

## BILL OF MATERIALS · EXTENDED ATTRIBUTES

ITEM

Duck isolators

## MATERIALS REFERENCE

0 MATERIAL

CODE

DESCRIPTION

PROPERTIES

USED IN

Cross-reference.



DATASHEET · ISOLATORS

# Duck isolators.

SKU BIO-0077 Spec v1 Rev. 2026-07-10

DATASHEET · P

**BIO.**

Rev 2026

## OPERATING & STERILIZATION ENVELOPES

CONDITIONS, CYCLES, COMI

### OPERATING

TEMPERATURE

HUMIDITY

PRESSURE

### STORAGE

TEMPERATURE

HUMIDITY

ORIENTATION

### STERILIZATION & CLEANING

AUTOCLAVE

GAMMA

AVOID

ETO

WIPE

## ANIMAL COMPATIBILITY

BY SPECIES

## NOTES

USE & S

SPECIES	BODY WEIGHT	CHAMBER FIT
---------	-------------	-------------

Specifications verified against current published product data. Verified 2026-07-10 · Since 2026-07-10.

**Cite:** ConductScience BIO-0077, Spec v1, 2026-07-10. [conductscience.com/lab/duck-isolators](https://conductscience.com/lab/duck-isolators)

INFO@CONDUCTSCIENCE.COM    CONDUCTSCIENCE.COM

BIO-0077 · DATASH