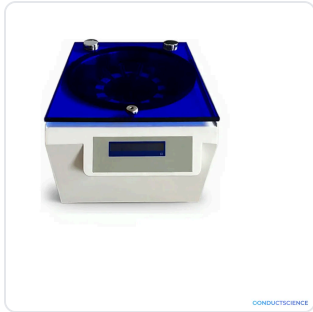


DATASHEET · CENTRIFUGES

Gel Card Centrifuge.

SKU BIO-0939 Spec v1 Rev. 2026-07-11

DATASHEET · P
BIO-
Rev 2026



PRODUCT FAMILY
 ANIMAL MODEL
 APPLICATION
 COUNTRY OF ORIGIN
 MFG. STANDARD
 LOT TRACEABLE **No**
 VERIFIED **Spec v1 · 2026-07-11**

PRODUCT SPECIFICATIONS

FROM PUBLISHED PROD

DIMENSIONS L×W×H (MM)	27.0 × 48.0 × 35.8	WEIGHT (KG)	17.0
AVAILABILITY	Out of stock		

BILL OF MATERIALS · 1 LINE ITEMS

BASE CONF

QTY	ITEM	SKU
1	Gel Card Centrifuge	BIO-0939



Scope.

INFO@CONDUCTSCIENCE.COM CONDUCTSCIENCE.COM

BIO-0939 · DATASH

DATASHEET · CENTRIFUGES

Gel Card Centrifuge.

SKU BIO-0939 Spec v1 Rev. 2026-07-11

DATASHEET · P

BIO-

Rev 2026

BILL OF MATERIALS · EXTENDED ATTRIBUTES

ITEM

Gel Card Centrifuge

MATERIALS REFERENCE

0 MATERIAL

CODE

DESCRIPTION

PROPERTIES

USED IN

Cross-reference.

DATASHEET · CENTRIFUGES

Gel Card Centrifuge.

SKU BIO-0939 Spec v1 Rev. 2026-07-11

DATASHEET · P

BIO-

Rev 2026

OPERATING & STERILIZATION ENVELOPES

CONDITIONS, CYCLES, COMI

OPERATING

TEMPERATURE

HUMIDITY

PRESSURE

STORAGE

TEMPERATURE

HUMIDITY

ORIENTATION

STERILIZATION & CLEANING

AUTOCLAVE

GAMMA

AVOID

ETO

WIPE

ANIMAL COMPATIBILITY

BY SPECIES

NOTES

USE & S

SPECIES	BODY WEIGHT	CHAMBER FIT
---------	-------------	-------------

Specifications verified against current published product data. Verified 2026-07-11 · Since 2026-07-11.

Cite: ConductScience BIO-0939, Spec v1, 2026-07-11. conductscience.com/lab/gel-card-centrifuge

INFO@CONDUCTSCIENCE.COM CONDUCTSCIENCE.COM

BIO-0939 · DATASH