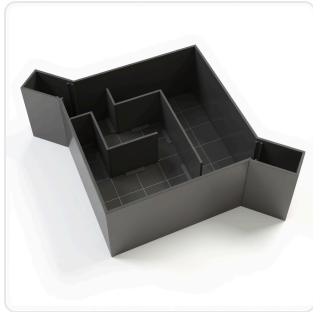


DATASHEET · BEHAVIORAL MAZES

# Hebb Williams.

SKU ME-4701/4702 Spec v1 Rev. 2026-07-05

DATASHEET · P  
**ME-4701/**  
Rev 2026

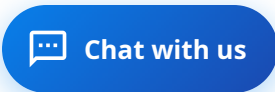


PRODUCT FAMILY  
ANIMAL MODEL  
APPLICATION  
COUNTRY OF ORIGIN  
MFG. STANDARD  
LOT TRACEABLE **No**  
VERIFIED **Spec v1 · 2026-07-05**

PRODUCT SPECIFICATIONS

FROM PUBLISHED PRODUCT

PRODUCT TYPE	variable	MAZE_LAYOUT	square area
WALL_FINISH	matte finish to minimize reflections	MAZE_CONFIGURATIONS	6 acquisition layouts and 12 test layouts
GOAL_BOX_LOCATION	opposite corner from starting point	FOOD_REWARD_WELL	included in goal box
ADJUSTABLE_INTERNAL_WALLS	yes	MOUNTING_REQUIREMENTS	table placement, no dedicated stands required
LIGHTING_REQUIREMENTS	dimly lit environment	VIDEO_RECORDING_COMPATIBLE	yes, camera mounted above maze
BEHAVIORAL_CONSTRUCT	spatial learning, spatial memory, working memory, cognitive flexibility, problem solving, navigation behavior	AUTOMATION_LEVEL	manual
MATERIAL	opaque black or white material	COLOR	Black, White
DISPLAY_TYPE	None	DIMENSIONS	60cm x 60cm (mice), 75cm x 75cm (rats) x 10cm walls (mice), 25cm (rats)
RESEARCH_DOMAIN	Aging Research, Behavioral Pharmacology, Learning and Memory, Neurodegeneration, Neuroscience, Toxicology	SPECIES	Mouse, Rat
COMPATIBLE_TRACKING_SOFTWARE	ConductVision	DIMENSIONS LxWxH (MM)	43.2 x 38.0 x 27.9
WEIGHT (KG)	21.0	AVAILABILITY	In stock



1 LINE ITEMS

BASE CONFIGURATION

QTY	ITEM	SKU
	Scope. Hebb Williams	ME-4701/4702
INFO@CONDUCTSCIENCE.COM	CONDUCTSCIENCE.COM	ME-4701/4702 · DATASH

DATASHEET · BEHAVIORAL MAZES

# Hebb Williams.

SKU ME-4701/4702 Spec v1 Rev. 2026-07-05

DATASHEET · P

**ME-4701/**

Rev 2026

## BILL OF MATERIALS · EXTENDED ATTRIBUTES

ITEM
Hebb Williams

## MATERIALS REFERENCE

0 MATERIAL

CODE	DESCRIPTION	PROPERTIES	USED IN
------	-------------	------------	---------

Cross-reference.



DATASHEET · BEHAVIORAL MAZES

# Hebb Williams.

SKU ME-4701/4702 Spec v1 Rev. 2026-07-05

DATASHEET · P

**ME-4701/**

Rev 2026

## OPERATING & STERILIZATION ENVELOPES

CONDITIONS, CYCLES, COMI

### OPERATING

TEMPERATURE

HUMIDITY

PRESSURE

### STORAGE

TEMPERATURE

HUMIDITY

ORIENTATION

### STERILIZATION & CLEANING

AUTOCLAVE

GAMMA

AVOID

ETO

WIPE

## ANIMAL COMPATIBILITY

BY SPECIES

## NOTES

USE & S

SPECIES	BODY WEIGHT	CHAMBER FIT
---------	-------------	-------------

Specifications verified against current published product data. Verified 2026-07-05 · Since 2026-07-05.

**Cite:** ConductScience ME-4701/4702, Spec v1, 2026-07-05. [conductscience.com/lab/hebb-williams](https://conductscience.com/lab/hebb-williams)

INFO@CONDUCTSCIENCE.COM    CONDUCTSCIENCE.COM

ME-4701/4702 · DATASH