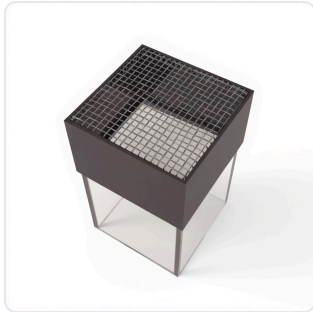


DATASHEET · BEHAVIORAL MAZES

Horizontal Grid Test.

SKU ME-5001/5002 Spec v1 Rev. 2026-07-08

DATASHEET · P
ME-5001/
Rev 2026



PRODUCT FAMILY
ANIMAL MODEL
APPLICATION
COUNTRY OF ORIGIN
MFG. STANDARD
LOT TRACEABLE **No**
VERIFIED **Spec v1 · 2026-07-08**

PRODUCT SPECIFICATIONS

FROM PUBLISHED PRODUCT

PRODUCT TYPE	variable	ORIENTATION	vertically positioned
APPARATUS_TYPE	grid box	SIZE	Mouse, Rat
BEHAVIORAL CONSTRUCT	Motor Coordination, Grip Strength, Neuromuscular Function	AUTOMATION LEVEL	manual
MATERIAL	Plexiglass	SPECIES	Mouse, Rat
RESEARCH DOMAIN	Behavioral Pharmacology, Motor Function, Neurodegeneration, Neuroscience, Pain Research, Toxicology	COMPATIBLE TRACKING SOFTWARE	ConductVision
DIMENSIONS LxWxH (MM)	43.2 × 38.0 × 27.9	WEIGHT (KG)	21.0
AVAILABILITY	In stock		

BILL OF MATERIALS · 1 LINE ITEMS

BASE CONFIGURATION

QTY	ITEM	SKU
1	Horizontal Grid Test	ME-5001/5002



Scope.

INFO@CONDUCTSCIENCE.COM CONDUCTSCIENCE.COM

ME-5001/5002 · DATASH

DATASHEET · BEHAVIORAL MAZES

Horizontal Grid Test.

SKU ME-5001/5002 Spec v1 Rev. 2026-07-08

DATASHEET · P

ME-5001/

Rev 2026

BILL OF MATERIALS · EXTENDED ATTRIBUTES

ITEM
Horizontal Grid Test

MATERIALS REFERENCE

0 MATERIAL

CODE	DESCRIPTION	PROPERTIES	USED IN
------	-------------	------------	---------

Cross-reference.

DATASHEET · BEHAVIORAL MAZES

Horizontal Grid Test.

SKU ME-5001/5002 Spec v1 Rev. 2026-07-08

DATASHEET · P

ME-5001/

Rev 2026

OPERATING & STERILIZATION ENVELOPES

CONDITIONS, CYCLES, COMI

OPERATING

TEMPERATURE

HUMIDITY

PRESSURE

STORAGE

TEMPERATURE

HUMIDITY

ORIENTATION

STERILIZATION & CLEANING

AUTOCLAVE

GAMMA

AVOID

ETO

WIPE

ANIMAL COMPATIBILITY

BY SPECIES

NOTES

USE & S

SPECIES	BODY WEIGHT	CHAMBER FIT
---------	-------------	-------------

Specifications verified against current published product data. Verified 2026-07-08 · Since 2026-07-08.

Cite: ConductScience ME-5001/5002, Spec v1, 2026-07-08. conductscience.com/lab/horizontal-grid-test

INFO@CONDUCTSCIENCE.COM CONDUCTSCIENCE.COM

ME-5001/5002 · DATASH