

DATASHEET · BEHAVIORAL MAZES

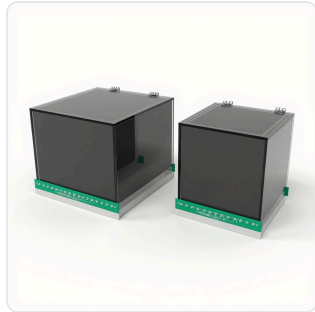
Learned Helplessness.

SKU CS-958392 Spec v1 Rev. 2026-07-08

DATASHEET · P

CS-95

Rev 2026



PRODUCT FAMILY

ANIMAL MODEL

APPLICATION

COUNTRY OF ORIGIN

MFG. STANDARD

LOT TRACEABLE

No

VERIFIED

Spec v1 · 2026-07-08

PRODUCT SPECIFICATIONS

FROM PUBLISHED PROD

PRODUCT TYPE	variable	WARRANTY_LENGTH	1 YEAR
RAT_CHAMBER_SMALL_DIMENSIONS	25 x 30 x 21.5 cm	RAT_CHAMBER_LARGE_DIMENSIONS	48.5 x 30 x 21.5 cm
MOUSE_CHAMBER_DIMENSIONS	18 x 18 x 30 cm ³ each compartment	RAT_STEEL_ROD_DIAMETER	6 mm
RAT_STEEL_ROD_SPACING	20 mm apart	MOUSE_STEEL_ROD_DIAMETER	5 mm
MOUSE_STEEL_ROD_SPACING	6 mm spacing	FLOOR_TYPE	Steel rods
SHOCK_DELIVERY_LOCATION	Foot or tail	CONDITIONING_FEATURES	Conditioned stimulus (tone or light)
MONITORING_CAPABILITY	Infrared - light beams for shuttle responses	SOFTWARE_INTEGRATION	Neuralynx, Ethovision Integration and Email integration
IO_BOXES_REQUIRED	No	STORAGE_INCLUDED	Yes
ASSEMBLY_REQUIRED	Yes	CONTEXTUAL_PLATES	Included
BEHAVIORAL_CONSTRUCT	Learned helplessness, Escape behavior, Avoidance learning, Stress response, Motivational deficit, Behavioral despair, Passive coping	AUTOMATION_LEVEL	semi-automated
MATERIAL	Plexiglass, Steel	RESEARCH_DOMAIN	Addiction Research, Anxiety and Depression, Behavioral Pharmacology, Learning and Memory, Neurodegeneration, Neuroscience
SPECIES	Mouse, Rat	COMPATIBLE_TRACKING_SOFTWARE	ConductVision
DIMENSIONS LxWxH (MM)	65.0 x 36.0 x 27.0	WEIGHT (KG)	6.06

Chat with us

In stock

Scope:

QTY ITEM

SKU

INFO@CONDUCTSCIENCE.COM

CONDUCTSCIENCE.COM

CS-958392 · DATASH

DATASHEET · BEHAVIORAL MAZES

Learned Helplessness.

SKU CS-958392 Spec v1 Rev. 2026-07-08

DATASHEET · P

CS-95

Rev 2026

BILL OF MATERIALS · EXTENDED ATTRIBUTES

ITEM

Learned Helplessness

MATERIALS REFERENCE

0 MATERIAL

CODE

DESCRIPTION

PROPERTIES

USED IN

Cross-reference.

DATASHEET · BEHAVIORAL MAZES

Learned Helplessness.

SKU CS-958392 Spec v1 Rev. 2026-07-08

DATASHEET · P

CS-95

Rev 2026

OPERATING & STERILIZATION ENVELOPES

CONDITIONS, CYCLES, COMI

OPERATING

TEMPERATURE

HUMIDITY

PRESSURE

STORAGE

TEMPERATURE

HUMIDITY

ORIENTATION

STERILIZATION & CLEANING

AUTOCLAVE

GAMMA

AVOID

ETO

WIPE

ANIMAL COMPATIBILITY

BY SPECIES

NOTES

USE & S

SPECIES	BODY WEIGHT	CHAMBER FIT
---------	-------------	-------------

Specifications verified against current published product data. Verified 2026-07-08 · Since 2026-07-08.

Cite: ConductScience CS-958392, Spec v1, 2026-07-08. conductscience.com/lab/learned-helplessness

INFO@CONDUCTSCIENCE.COM CONDUCTSCIENCE.COM

CS-958392 · DATASH