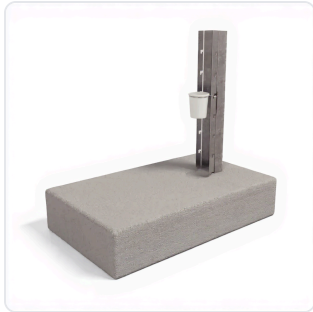


DATASHEET · BEHAVIORAL MAZES

# Mimosa Habituation.

SKU ME-8403 Spec v1 Rev. 2026-07-09

DATASHEET · P  
**ME-**  
Rev 2026



PRODUCT FAMILY  
ANIMAL MODEL  
APPLICATION  
COUNTRY OF ORIGIN  
MFG. STANDARD  
LOT TRACEABLE **No**  
VERIFIED **Spec v1 · 2026-07-09**

PRODUCT SPECIFICATIONS

FROM PUBLISHED PROD

PLANT_SPECIES	Mimosa pudica	OPTIMAL_SENSITIVITY_TEMPERATURE	40°C
LIGHTING_CYCLE	14-hour light and 10-hour dark cycle	PEAK_SENSITIVITY_TIME	around 5 AM
LOWEST_SENSITIVITY_TIME	7PM	PHOTOSYNTHETIC_RATE	up to 40%
BEHAVIORAL CONSTRUCT	habituation learning, stimulus response, touch sensitivity, defense mechanisms	AUTOMATION LEVEL	manual
TEMPERATURE RANGE	14°C to 60°C	RESEARCH DOMAIN	Behavioral Ecology, Developmental Biology, Environmental Biology, Physiology
COMPATIBLE TRACKING SOFTWARE	ConductVision	DIMENSIONS LxWxH (MM)	43.2 × 38.0 × 27.9
WEIGHT (KG)	21.0	AVAILABILITY	In stock

BILL OF MATERIALS · 1 LINE ITEMS

BASE CONF

QTY	ITEM	SKU
1	Mimosa Habituation	ME-8403



---

**Scope.**

[INFO@CONDUCTSCIENCE.COM](mailto:INFO@CONDUCTSCIENCE.COM)   [CONDUCTSCIENCE.COM](http://CONDUCTSCIENCE.COM)

ME-8403 · DATASH

DATASHEET · BEHAVIORAL MAZES

# Mimosa Habituation.

SKU ME-8403 Spec v1 Rev. 2026-07-09

DATASHEET · P

**ME-**

Rev 2026

BILL OF MATERIALS · EXTENDED ATTRIBUTES

ITEM

Mimosa Habituation

MATERIALS REFERENCE

0 MATERIAL

CODE

DESCRIPTION

PROPERTIES

USED IN

Cross-reference.



DATASHEET · BEHAVIORAL MAZES

# Mimosa Habituation.

SKU ME-8403 Spec v1 Rev. 2026-07-09

DATASHEET · P

ME-

Rev 2026

## OPERATING & STERILIZATION ENVELOPES

CONDITIONS, CYCLES, COMI

### OPERATING

TEMPERATURE

HUMIDITY

PRESSURE

### STORAGE

TEMPERATURE

HUMIDITY

ORIENTATION

### STERILIZATION & CLEANING

AUTOCLAVE

GAMMA

AVOID

ETO

WIPE

## ANIMAL COMPATIBILITY

BY SPECIES

## NOTES

USE & S

SPECIES	BODY WEIGHT	CHAMBER FIT
---------	-------------	-------------

Specifications verified against current published product data. Verified 2026-07-09 · Since 2026-07-09.

**Cite:** ConductScience ME-8403, Spec v1, 2026-07-09. [conductscience.com/lab/mimosa-habituations](https://conductscience.com/lab/mimosa-habituations)

INFO@CONDUCTSCIENCE.COM    CONDUCTSCIENCE.COM

ME-8403 · DATASH