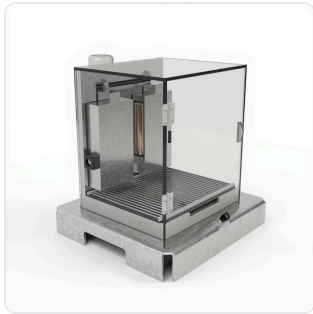


DATASHEET · BEHAVIORAL MAZES

# OroFacial Pain Assessment Device (OPAD).

SKU ME-8013 Spec v1 Rev. 2026-07-09

DATASHEET · P  
**ME**  
 Rev 2026



PRODUCT FAMILY  
 ANIMAL MODEL  
 APPLICATION  
 COUNTRY OF ORIGIN  
 MFG. STANDARD  
 LOT TRACEABLE **No**  
 VERIFIED **Spec v1 · 2026-07-09**

PRODUCT SPECIFICATIONS

FROM PUBLISHED PRODU

|                              |  |                              |  |
|------------------------------|--|------------------------------|--|
| PRODUCT TYPE                 | variable   | CAGE_MATERIAL                | Clear acrylic cage with metal base   |
| CUSTOM_DIMENSIONS_AVAILABLE  | Yes  | THERMODE_TYPE                | Dual Peltier - controlled temperature thermodes or mechanical protrusion                               |
| WIRE_DIAMETERS               | 0.010" and 0.007" nickel-titanium wires  | SIMULTANEOUS_CAGES_AVAILABLE | Up to 16 cages   |
| REMOVABLE_WASTE_TRAY         | Yes - feces and urine tray   | WHITE_NOISE_CONTROL          | Manual start/stop  |
| REWARD_BOTTLE_INCLUDED       | Yes - metal spout with lick detection  | REWARD_INTAKE_MEASUREMENT    | Optional - in grams  |
| ADJUSTABLE_THERMODE_DISTANCE | Yes - variable distance between thermodes  | SOFTWARE_INTEGRATION         | Neuralynx, Ethovision, SMS and others  |
| DATA_COLLECTION_METHODS      | Licks, contacts, ratios with duration, latency, frequency measurements   | HISTORICAL_DATA_STORAGE      | Yes  |
| BEHAVIORAL_CONSTRUCT         | Pain Threshold, Hyperalgesia, Allodynia, Operant Conditioning, Voluntary Pain Response, Nociception, Thermal Sensitivity | AUTOMATION_LEVEL             | semi-automated   |
| MATERIAL                     | Clear Acrylic, Metal, Nickel-titanium  | TEMPERATURE_RANGE            | 25°C to 75°C   |
| DIMENSIONS                   | Mouse: 10 cm, Rat: 20 cm x 10 cm, Rat: 20 cm x 20 cm   | RESEARCH_DOMAIN              | Addiction Research, Behavioral Pharmacology, Neurodegenerative Neuroscience, Pain Research, Toxicology |
| SPECIES                      | Mouse, Rat   | COMPATIBLE_TRACKING_SOFTWARE | ConductVision  |
| DIMENSIONS LxWxH (MM)        | 43.2 x 38.0 x 27.9   | WEIGHT (KG)                  | 21.0   |

AVAILABILITY

**In stock**

[INFO@CONDUCTSCIENCE.COM](mailto:INFO@CONDUCTSCIENCE.COM)

[CONDUCTSCIENCE.COM](https://CONDUCTSCIENCE.COM)

ME-8013 · DATASH

DATASHEET · BEHAVIORAL MAZES

# OroFacial Pain Assessment Device (OPAD).

SKU ME-8013 Spec v1 Rev. 2026-07-09

DATASHEET · P

ME

Rev 2026

BILL OF MATERIALS · EXTENDED ATTRIBUTES

ITEM

OroFacial Pain Assessment Device (OPAD)

MATERIALS REFERENCE

0 MATERIAL

| CODE | DESCRIPTION | PROPERTIES | USED IN |
|------|-------------|------------|---------|
|------|-------------|------------|---------|

Cross-reference.



DATASHEET · BEHAVIORAL MAZES

# OroFacial Pain Assessment Device (OPAD).

SKU ME-8013 Spec v1 Rev. 2026-07-09

DATASHEET · P

ME

Rev 2026

## OPERATING & STERILIZATION ENVELOPES

CONDITIONS, CYCLES, COM

### OPERATING

TEMPERATURE

HUMIDITY

PRESSURE

### STORAGE

TEMPERATURE

HUMIDITY

ORIENTATION

### STERILIZATION & CLEANING

AUTOCLAVE

GAMMA

AVOID

ETO

WIPE

## ANIMAL COMPATIBILITY

BY SPECIES

## NOTES

USE & S

| SPECIES | BODY WEIGHT | CHAMBER FIT |
|---------|-------------|-------------|
|---------|-------------|-------------|

Specifications verified against current published product data. Verified 2026-07-09 · Since 2026-07-09.

**Cite:** ConductScience ME-8013, Spec v1, 2026-07-09. [conductscience.com/lab/opad](https://conductscience.com/lab/opad)

INFO@CONDUCTSCIENCE.COM    CONDUCTSCIENCE.COM

ME-8013 · DATASH