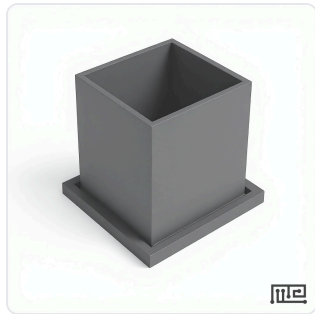


DATASHEET · BEHAVIORAL MAZES

Open Field Test.

SKU ME-3201/ 3202/ 3203/ 3204/ 3205/ 3206 Spec v1 Rev. 2026-06-23

DATASHEET · P
ME-3201/ 3202/ 3203/ 320
 Rev 2026



PRODUCT FAMILY
 ANIMAL MODEL
 APPLICATION
 COUNTRY OF ORIGIN
 MFG. STANDARD
 LOT TRACEABLE **No**
 VERIFIED **Spec v1 · 2026-06-23**

PRODUCT SPECIFICATIONS

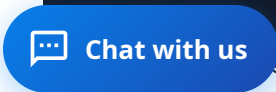
FROM PUBLISHED PROD

PRODUCT TYPE	variable	WALL_TYPES	opaque or clear
WALL_FEATURE	easily detachable for easy cleaning	FLOOR_INSERTS	grid floor inserts available for video tracking
ARENA_SHAPE	square	WALL_FINISHES	opaque colors and matte finish available
FLOOR_OPTIONS	with or without gridlines	CENTER_MARKING	square area in center may be optional
RECOMMENDED_WALL_TYPE	clear walls for anxiety measurements	RECOMMENDED_WALL_TYPE	opaque walls for novel object recognition
SIZE	Mouse, Rat, XS, Mouse (Set of 4), Rat (Set of 4), XS (Set of 4)	BEHAVIORAL CONSTRUCT	anxiety, exploratory behavior, locomotor activity, thigmotaxis, response
AUTOMATION LEVEL	manual	SPECIES	Mouse, Rat
RESEARCH DOMAIN	Aging Research, Anxiety and Depression, Behavioral Pharmacology, Learning and Memory, Motor Function, Neuroscience	ARENA_DIMENSIONS	Mouse: 40 × 40 × 30 cm (L × W × H) Rat: 60 × 60 × 40 cm (L × W × H) 25 × 25 × 25 cm (L × W × H)
COMPATIBLE TRACKING SOFTWARE	ConductVision	DIMENSIONS L×W×H (MM)	88.9 × 88.9 × 40.0
WEIGHT (KG)	109.0	AVAILABILITY	In stock

BILL OF MATERIALS · 1 LINE ITEMS

BASE CONFIGURATION

SKU	ME-3201/ 3202/ 3203/ 3204/ 3205/ 3206
-----	---------------------------------------



Scope.

INFO@CONDUCTSCIENCE.COM

CONDUCTSCIENCE.COM

ME-3201/ 3202/ 3203/ 3204/ 3205/ 3206 · DATASH

DATASHEET · BEHAVIORAL MAZES

Open Field Test.

SKU ME-3201/ 3202/ 3203/ 3204/ 3205/ 3206 Spec v1 Rev. 2026-06-23

DATASHEET · P
ME-3201/ 3202/ 3203/ 320
Rev 2026

BILL OF MATERIALS · EXTENDED ATTRIBUTES

ITEM
Open Field Test

MATERIALS REFERENCE

0 MATERIAL

CODE	DESCRIPTION	PROPERTIES	USED IN
------	-------------	------------	---------

Cross-reference.

DATASHEET · BEHAVIORAL MAZES

Open Field Test.

SKU ME-3201/ 3202/ 3203/ 3204/ 3205/ 3206 Spec v1 Rev. 2026-06-23

DATASHEET · P
ME-3201/ 3202/ 3203/ 320
Rev 2026

OPERATING & STERILIZATION ENVELOPES

CONDITIONS, CYCLES, COMI

OPERATING

TEMPERATURE

HUMIDITY

PRESSURE

STORAGE

TEMPERATURE

HUMIDITY

ORIENTATION

STERILIZATION & CLEANING

AUTOCLAVE

GAMMA

AVOID █

ETO

WIPE █

ANIMAL COMPATIBILITY BY SPECIES

NOTES USE & S

SPECIES	BODY WEIGHT	CHAMBER FIT
---------	-------------	-------------

Specifications verified against current published product data. **Verified 2026-06-23** · **Since 2026-06-23**.

Cite: ConductScience ME-3201/ 3202/ 3203/ 3204/ 3205/ 3206, Spec v1, 2026-06-23. conductscience.com/lab/open-field-maze

INFO@CONDUCTSCIENCE.COM

CONDUCTSCIENCE.COM

ME-3201/ 3202/ 3203/ 3204/ 3205/ 3206 · DATASH