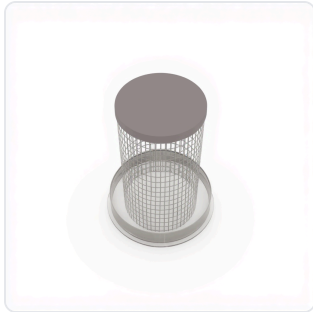


DATASHEET · BEHAVIORAL MAZES

# Pawedness Trait Test (PaTRaT).

SKU ME-15101/15102 Spec v1 Rev. 2026-07-09

DATASHEET · P  
**ME-15101/1**  
 Rev 2026



PRODUCT FAMILY  
 ANIMAL MODEL  
 APPLICATION  
 COUNTRY OF ORIGIN  
 MFG. STANDARD  
 LOT TRACEABLE **No**  
 VERIFIED **Spec v1 · 2026-07-09**

PRODUCT SPECIFICATIONS

FROM PUBLISHED PROD

PRODUCT TYPE	variable	MESH_CYLINDER_LENGTH	40 cm
MESH_CYLINDER_DIAMETER	17.5 cm	GRID_HOLE_DIMENSIONS	1.1 cm x 2.2 cm
REWARD HOLDER HEIGHT	4 cm	REWARD HOLDER WIDTH	2 cm
SESSION_DURATION	10 minutes	REWARDS_PER_SESSION	10 rewards
FAMILIARIZATION_SESSIONS	2 sessions x 10 minutes each	MOTIVATION_TRAINING_SESSIONS	1-2 sessions x 15 minutes each
MINIMUM_INTERVAL_BETWEEN_SESSIONS	4 hours	PAWEDNESS_SCALE	+4 to -4
BEHAVIORAL CONSTRUCT	Motor laterality, Paw preference, Motor asymmetry, Handedness, Lateral motor behavior	AUTOMATION LEVEL	manual
MATERIAL	Plexiglass, wire mesh	DISPLAY TYPE	None
DIMENSIONS	50 cm x 75 cm	RESEARCH DOMAIN	Behavioral Pharmacology, Developmental Biology, Learning Memory, Motor Function, Neurodegeneration, Neuroscience
SPECIES	Mouse, Rat	COMPATIBLE TRACKING SOFTWARE	ConductVision
DIMENSIONS LxWxH (MM)	43.2 x 38.0 x 27.9	WEIGHT (KG)	21.0
AVAILABILITY	In stock		

BILL OF MATERIALS · 1 LINE ITEMS

BASE CONF

QTY	ITEM	SKU
	Scope. Pawedness Trait Test (PaTRaT)	ME-15101/15102
INFO@CONDUCTSCIENCE.COM	CONDUCTSCIENCE.COM	ME-15101/15102 · DATASH

DATASHEET · BEHAVIORAL MAZES

# Pawedness Trait Test (PaTRaT).

SKU ME-15101/15102 Spec v1 Rev. 2026-07-09

DATASHEET · P

**ME-15101/1**

Rev 2026

## BILL OF MATERIALS · EXTENDED ATTRIBUTES

ITEM

Pawedness Trait Test (PaTRaT)

## MATERIALS REFERENCE

0 MATERIAL

CODE

DESCRIPTION

PROPERTIES

USED IN

Cross-reference.



DATASHEET · BEHAVIORAL MAZES

# Pawedness Trait Test (PaTRaT).

SKU ME-15101/15102 Spec v1 Rev. 2026-07-09

DATASHEET · P  
**ME-15101/1**  
Rev 2026

## OPERATING & STERILIZATION ENVELOPES

CONDITIONS, CYCLES, COMI

### OPERATING

TEMPERATURE

HUMIDITY

PRESSURE

### STORAGE

TEMPERATURE

HUMIDITY

ORIENTATION

### STERILIZATION & CLEANING

AUTOCLAVE

GAMMA

AVOID

ETO

WIPE

## ANIMAL COMPATIBILITY

BY SPECIES

## NOTES

USE & S

SPECIES	BODY WEIGHT	CHAMBER FIT
---------	-------------	-------------

Specifications verified against current published product data. Verified 2026-07-09 · Since 2026-07-09.

**Cite:** ConductScience ME-15101/15102, Spec v1, 2026-07-09. [conductscience.com/lab/pawedness-trait-test](https://conductscience.com/lab/pawedness-trait-test)

INFO@CONDUCTSCIENCE.COM    CONDUCTSCIENCE.COM

ME-15101/15102 · DATASH