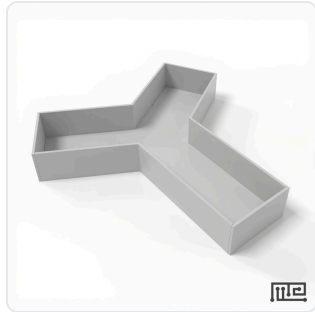


DATASHEET · BEHAVIORAL MAZES

Planaria Y Maze.

SKU CS-958169 Spec v1 Rev. 2026-07-09

DATASHEET · P
CS-958169
Rev 2026-07-09



PRODUCT FAMILY

ANIMAL MODEL

APPLICATION

COUNTRY OF ORIGIN

MFG. STANDARD

LOT TRACEABLE **No**

VERIFIED **Spec v1 · 2026-07-09**

PRODUCT SPECIFICATIONS

FROM PUBLISHED PROD

BEHAVIORAL CONSTRUCT	Spatial Learning, Memory, Choice Behavior, Decision Making	AUTOMATION LEVEL	manual
RESEARCH DOMAIN	Behavioral Pharmacology, Developmental Biology, Learning and Memory, Neuroscience, Toxicology	SPECIES	Planaria
COMPATIBLE TRACKING SOFTWARE	ConductVision	DIMENSIONS L×W×H (MM)	65.0 × 36.0 × 27.0
WEIGHT (KG)	6.06	AVAILABILITY	In stock

BILL OF MATERIALS · 1 LINE ITEMS

BASE CONF

QTY	ITEM	SKU
1	Planaria Y Maze	CS-958169



Scope.

INFO@CONDUCTSCIENCE.COM CONDUCTSCIENCE.COM

CS-958169 · DATASH

DATASHEET · BEHAVIORAL MAZES

Planaria Y Maze.

SKU CS-958169 Spec v1 Rev. 2026-07-09

DATASHEET · P
CS-95
Rev 2026

BILL OF MATERIALS · EXTENDED ATTRIBUTES

ITEM
Planaria Y Maze

MATERIALS REFERENCE

0 MATERIALS

CODE	DESCRIPTION	PROPERTIES	USED IN
------	-------------	------------	---------

Cross-reference.

DATASHEET · BEHAVIORAL MAZES

Planaria Y Maze.

SKU CS-958169 Spec v1 Rev. 2026-07-09

DATASHEET · P

CS-95

Rev 2026

OPERATING & STERILIZATION ENVELOPES

CONDITIONS, CYCLES, COM

OPERATING

TEMPERATURE

HUMIDITY

PRESSURE

STORAGE

TEMPERATURE

HUMIDITY

ORIENTATION

STERILIZATION & CLEANING

AUTOCLAVE

GAMMA

AVOID

ETO

WIPE

ANIMAL COMPATIBILITY

BY SPECIES

NOTES

USE & S

SPECIES	BODY WEIGHT	CHAMBER FIT
---------	-------------	-------------

Specifications verified against current published product data. Verified 2026-07-09 · Since 2026-07-09.

Cite: ConductScience CS-958169, Spec v1, 2026-07-09. conductscience.com/lab/planaria-y-maze

INFO@CONDUCTSCIENCE.COM CONDUCTSCIENCE.COM

CS-958169 · DATASH