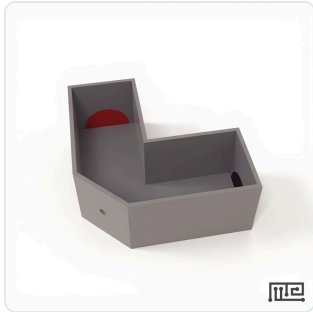


DATASHEET · BEHAVIORAL MAZES

Psyllid Y-Maze.

SKU CS-958168 Spec v1 Rev. 2026-07-07

DATASHEET · P
CS-958168
 Rev 2026-07-07



PRODUCT FAMILY
 ANIMAL MODEL
 APPLICATION
 COUNTRY OF ORIGIN
 MFG. STANDARD
 LOT TRACEABLE **No**
 VERIFIED **Spec v1 · 2026-07-07**

PRODUCT SPECIFICATIONS

FROM PUBLISHED PROD

BEHAVIORAL CONSTRUCT	spatial learning, preference behavior, decision-making, choice behavior, host selection	AUTOMATION LEVEL	manual
RESEARCH DOMAIN	Agricultural Research, Behavioral Ecology, Entomology, Environmental Monitoring	SPECIES	Drosophila
COMPATIBLE TRACKING SOFTWARE	ConductVision	DIMENSIONS L×W×H (MM)	65.0 × 36.0 × 27.0
WEIGHT (KG)	6.06	AVAILABILITY	In stock

BILL OF MATERIALS · 1 LINE ITEMS

BASE CONF

QTY	ITEM	SKU
1	Psyllid Y-Maze	CS-958168



Scope.

INFO@CONDUCTSCIENCE.COM CONDUCTSCIENCE.COM

CS-958168 · DATASH

DATASHEET · BEHAVIORAL MAZES

Psyllid Y-Maze.

SKU CS-958168 Spec v1 Rev. 2026-07-07

DATASHEET · P
CS-95
Rev 2026

BILL OF MATERIALS · EXTENDED ATTRIBUTES

ITEM
Psyllid Y-Maze

MATERIALS REFERENCE

0 MATERIALS

CODE	DESCRIPTION	PROPERTIES	USED IN
------	-------------	------------	---------

Cross-reference.

DATASHEET · BEHAVIORAL MAZES

Psyllid Y-Maze.

SKU CS-958168 Spec v1 Rev. 2026-07-07

DATASHEET · P

CS-95

Rev 2026

OPERATING & STERILIZATION ENVELOPES

CONDITIONS, CYCLES, COM

OPERATING

TEMPERATURE

HUMIDITY

PRESSURE

STORAGE

TEMPERATURE

HUMIDITY

ORIENTATION

STERILIZATION & CLEANING

AUTOCLAVE

GAMMA

AVOID

ETO

WIPE

ANIMAL COMPATIBILITY

BY SPECIES

NOTES

USE & S

SPECIES	BODY WEIGHT	CHAMBER FIT
---------	-------------	-------------

Specifications verified against current published product data. Verified 2026-07-07 · Since 2026-07-07.

Cite: ConductScience CS-958168, Spec v1, 2026-07-07. conductscience.com/lab/psyllid-y-maze

INFO@CONDUCTSCIENCE.COM CONDUCTSCIENCE.COM

CS-958168 · DATASH