

DATASHEET · BEHAVIORAL MAZES

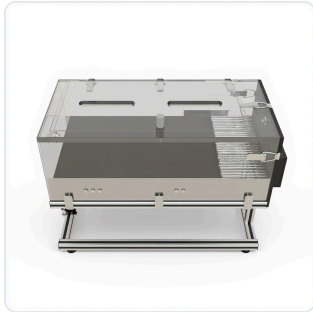
Rodent Metabolic Treadmill.

SKU 5308/9 Spec v1 Rev. 2026-06-23

DATASHEET · P

53

Rev 2026



PRODUCT FAMILY

ANIMAL MODEL

APPLICATION

COUNTRY OF ORIGIN

MFG. STANDARD

LOT TRACEABLE

No

VERIFIED

Spec v1 · 2026-06-23

PRODUCT SPECIFICATIONS

FROM PUBLISHED PRODUCT

PRODUCT TYPE	variable	INCLINE_RANGE	0 to 25 degrees
SLOPE_DEGREE	±35°	SHOCK_CURRENT	0-4mA adjustable in 0.1mA unit
SHOCK_FREQUENCY	1Hz, 2Hz, or 3Hz repetition rate	NOISE_LEVEL	Less than 40 dB
PUMP_FLOW	1-1000 ml per minute, adjustable	TREADMILL_SPEED	0-80 meters per minute
OPERATING_HUMIDITY	0-95%	BATTERY_CAPACITY	24v10AH lithium-ion
BATTERY_RUNTIME	At least 8 hours	POWER_SYSTEM	Single-phase
LANE_CONFIGURATION	1 lane	BELT_TYPE	Single belt texture
DEVICE TYPE	1 lane	SIZE	Rat, Mouse
BEHAVIORAL CONSTRUCT	Motor coordination, Exercise capacity, Endurance, Locomotor activity	AUTOMATION LEVEL	semi-automated
MATERIAL	Acrylic, Aluminum	POWER/VOLTAGE	163V
TEMPERATURE RANGE	5-40°C operating, -20-60°C storage	ACCURACY	0.1 meter/minute acceleration increments, 0.1mA shock current, 1ml for O ₂ and CO ₂ consumption, temperature, ±1% RH humidity, 0.075% air pressure
SPECIES	Mouse, Rat	DISPLAY TYPE	Touchscreen GUI
RESEARCH DOMAIN	Behavioral Pharmacology, Cardiovascular, Metabolic Research, Motor Function, Neuroscience	COMPATIBLE TRACKING SOFTWARE	ConductVision
DIMENSIONS L×W×H	80.0 × 75.0 × 45.0	WEIGHT (KG)	50.0
	In stock		



Scope:

QTY	ITEM	SKU
INFO@CONDUCTSCIENCE.COM	CONDUCTSCIENCE.COM	5308/9 · DATASH

DATASHEET · BEHAVIORAL MAZES

Rodent Metabolic Treadmill.

SKU 5308/9 Spec v1 Rev. 2026-06-23

DATASHEET · P

53

Rev 2026

BILL OF MATERIALS · EXTENDED ATTRIBUTES

ITEM

Rodent Metabolic Treadmill

MATERIALS REFERENCE

0 MATERIAL

CODE

DESCRIPTION

PROPERTIES

USED IN

Cross-reference.

DATASHEET · BEHAVIORAL MAZES

Rodent Metabolic Treadmill.

SKU 5308/9 Spec v1 Rev. 2026-06-23

DATASHEET · P

53

Rev 2026

OPERATING & STERILIZATION ENVELOPES

CONDITIONS, CYCLES, COMI

OPERATING

TEMPERATURE

HUMIDITY

PRESSURE

STORAGE

TEMPERATURE

HUMIDITY

ORIENTATION

STERILIZATION & CLEANING

AUTOCLAVE

GAMMA

AVOID

ETO

WIPE

ANIMAL COMPATIBILITY

BY SPECIES

NOTES

USE & S

SPECIES	BODY WEIGHT	CHAMBER FIT
---------	-------------	-------------

Specifications verified against current published product data. Verified 2026-06-23 · Since 2026-06-23.

Cite: ConductScience 5308/9, Spec v1, 2026-06-23. conductscience.com/lab/rodent-metabolic-treadmill

INFO@CONDUCTSCIENCE.COM CONDUCTSCIENCE.COM

5308/9 · DATASH