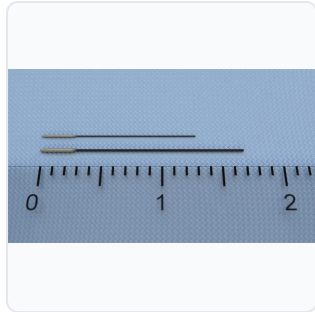


DATASHEET · NEUROSCIENCE MODELS

Silicone Coated MCAO Monofilament Suture.

SKU MSMC19B100PK50/MSMC21B120PK50/MSMC23B120PK50/MSMC25B150PK50 /MSMC26B150PK50/MSRC32B200PK50



PRODUCT FAMILY	
ANIMAL MODEL	
APPLICATION	
COUNTRY OF ORIGIN	
MFG. STANDARD	
LOT TRACEABLE	No
VERIFIED	Spec v1 · 2026-07-11

PRODUCT SPECIFICATIONS

FROM PUBLISHED PROD

PRODUCT TYPE	variable	COATING_LENGTH_MOUSE	3-4mm
COATING_LENGTH_RAT	5-6mm	HEAD_SHAPE	Cylinder-like silicone head
MANUFACTURING_TECHNIQUE	Open-molded manufacturing	SUTURE_TYPE	MCAO (Middle Cerebral Artery Occlusion)
CORE_TEMPERATURE_RANGE	36.5 - 37.5°C (during procedure)	ANESTHESIA_COMPATIBILITY	Isoflurane (4-5% induction, 2-3% maintenance)
STERILIZATION_REQUIREMENT	Yes - sterile environment	PACKAGE_SIZE	50pcs
SIZE	>35gr, 15-20gr, 21-25gr, 26-30gr, 31-35gr	AUTOMATION_LEVEL	manual
MATERIAL	Nylon, Silicone	DIMENSIONS	30mm (mouse models), 50mm (rat models)
RESEARCH_DOMAIN	Behavioral Pharmacology, Cardiovascular, Learning and Memory, Motor Function, Neurodegeneration, Neuroscience	SPECIES	Mouse
COATING_DIAMETER	0.17-0.19 mm, 0.20-0.21 mm, 0.22-0.23 mm, 0.24-0.25 mm	DIMENSIONS LxWxH (MM)	26.0 x 12.0 x 7.0
WEIGHT (KG)	1.1	AVAILABILITY	In stock

BILL OF MATERIALS · 1 LINE ITEMS

BASE CONF

QTY	ITEM	SKU
	1d MCAO Suture	MSMC19B100PK50/MSMC21B120PK50/MSMC23B120PK50/MSMC25B150PK50 /MSMC26B150PK50/MSRC32B200PK50/MSRC35B200PK50/MSRC37B250PK50 /MSRC40B250PK50/MSRC42B250PK50/MSRC45B300PK50



INFO@CONDUCTSCIENCE.COM

CONDUCTSCIENCE.COM/MSMC19B100PK50/MSMC21B120PK50/MSMC23B120PK50/MSMC26B150PK50/MSRC32B200PK50/MSRC35B200PK50/MSRC40B250PK50/MSRC42B250PK50/MSRC45B300PK50 · DATA:

DATASHEET · NEUROSCIENCE MODELS

Silicone Coated MCAO Monofilament Suture.

SKU MSMC19B100PK50/MSMC21B120PK50/MSMC23B120PK50/MSMC25B150PK50 /MSMC26B150PK50/MSRC32B200PK50

BILL OF MATERIALS · EXTENDED ATTRIBUTES

ITEM
Silicone Coated MCAO Monofilament Suture

MATERIALS REFERENCE

0 MATERIAL

CODE	DESCRIPTION	PROPERTIES	USED IN
------	-------------	------------	---------

Cross-reference.

INFO@CONDUCTSCIENCE.COM

CONDUCTSCIENCE.COM/MSMC19B100PK50/MSMC21B120PK50/MSMC23B120PK50/MSMC26B150PK50/MSRC32B200PK50/MSRC35B200PK50/MSRC40B250PK50/MSRC42B250PK50/MSRC45B300PK50 · DATA:

DATASHEET · NEUROSCIENCE MODELS

Silicone Coated MCAO Monofilament Suture.

SKU MSMC19B100PK50/MSMC21B120PK50/MSMC23B120PK50/MSMC25B150PK50 /MSMC26B150PK50/MSRC32B200PK50

OPERATING & STERILIZATION ENVELOPES

CONDITIONS, CYCLES, COMI

<p>OPERATING</p> <p>TEMPERATURE</p> <p>HUMIDITY</p> <p>PRESSURE</p>	<p>STORAGE</p> <p>TEMPERATURE</p> <p>HUMIDITY</p> <p>ORIENTATION</p>
--	---

<p>STERILIZATION & CLEANING</p> <p>AUTOCLAVE</p> <p>GAMMA</p> <p>AVOID</p> <p>ETO</p> <p>WIPE</p>	
--	--

ANIMAL COMPATIBILITY

BY SPECIES

NOTES

USE & S

SPECIES	BODY WEIGHT	CHAMBER FIT
---------	-------------	-------------

CONTINUOUSLY VERIFIED · SPEC V1

Specifications verified against current published product data. Verified 2026-07-11 · Since 2026-07-11.

Cite: ConductScience MSMC19B100PK50/MSMC21B120PK50/MSMC23B120PK50/MSMC25B150PK50

INFO@CONDUCTSCIENCE.COM

CONDUCTSCIENCE.COM/MSMC19B100PK50/MSMC21B120PK50/MSMC23B120PK50/MSMC25B150PK50/MSMC26B150PK50/MSRC32B200PK50/MSRC35B200PK50/MSRC38B200PK50/MSRC40B250PK50/MSRC42B250PK50/MSRC45B300PK50 · DATA: