

DATASHEET · BEHAVIORAL MAZES

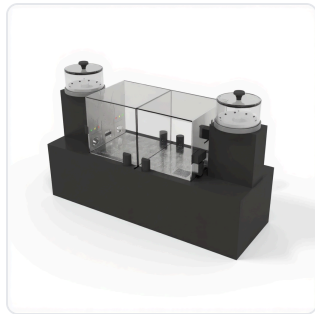
# Social Operant.

SKU CS-958343 Spec v1 Rev. 2026-07-09

DATASHEET · P

**CS-95**

Rev 2026

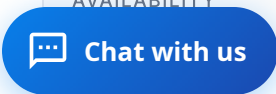


PRODUCT FAMILY  
 ANIMAL MODEL  
 APPLICATION  
 COUNTRY OF ORIGIN  
 MFG. STANDARD  
 LOT TRACEABLE **No**  
 VERIFIED **Spec v1 · 2026-07-09**

PRODUCT SPECIFICATIONS

FROM PUBLISHED PROD

PRODUCT TYPE	variable	LANE	Mouse 3 Lane, Rat 3 Lane, Mouse 6 Lane, Rat 6 Lane
ANGULAR_ACCELERATION	0.1 - 50 RPM	RUN_TIME	1 - 900 minutes
SPEED_MODE	Constant or Accelerating	ACCELERATION_TIME_RANGE	1 - 4999 seconds
SCREEN_SIZE	7 inch Width	INTERNAL_MEMORY	Store 60 run results
DATA_EXPORT	Excel	LANE_OPTIONS	3 Lane or 6 Lane
CHAMBER_CONFIGURATION	Two chambers (test chamber and target chamber)	DOOR_TYPE	Automated guillotine door with vertical grid
LEVERS	Two levers with liquid food receptacle	SOFTWARE_COMPATIBILITY	Noldus EthoVision XT
BEHAVIORAL_CONSTRUCT	Social motivation, Social preference, Social reward processing, Operant conditioning, Choice behavior, Social approach, Social withdrawal	AUTOMATION_LEVEL	semi-automated
SPEED/RPM	0.1 - 99.9 RPM	ACCURACY	0.1 RPM
SPECIES	Mouse, Rat	DISPLAY_TYPE	Touch Screen
RESEARCH_DOMAIN	Addiction Research, Anxiety and Depression, Behavioral Pharmacology, Learning and Memory, Neuroscience, Social Behavior	COMPATIBLE_TRACKING_SOFTWARE	ConductVision
DIMENSIONS LxWxH (MM)	65.0 × 36.0 × 27.0	WEIGHT (KG)	6.06
AVAILABILITY	In stock		



QTY	ITEM	SKU
-----	------	-----

INFO@CONDUCTSCIENCE.COM    CONDUCTSCIENCE.COM

CS-958343 · DATASH

DATASHEET · BEHAVIORAL MAZES

# Social Operant.

SKU CS-958343 Spec v1 Rev. 2026-07-09

DATASHEET · P

CS-95

Rev 2026

## BILL OF MATERIALS · EXTENDED ATTRIBUTES

ITEM

Social Operant

## MATERIALS REFERENCE

0 MATERIAL

CODE

DESCRIPTION

PROPERTIES

USED IN

Cross-reference.



DATASHEET · BEHAVIORAL MAZES

# Social Operant.

SKU CS-958343 Spec v1 Rev. 2026-07-09

DATASHEET · P

CS-95

Rev 2026

## OPERATING & STERILIZATION ENVELOPES

CONDITIONS, CYCLES, COM

### OPERATING

TEMPERATURE

HUMIDITY

PRESSURE

### STORAGE

TEMPERATURE

HUMIDITY

ORIENTATION

### STERILIZATION & CLEANING

AUTOCLAVE

GAMMA

AVOID

ETO

WIPE

## ANIMAL COMPATIBILITY

BY SPECIES

## NOTES

USE & S

SPECIES	BODY WEIGHT	CHAMBER FIT
---------	-------------	-------------

Specifications verified against current published product data. Verified 2026-07-09 · Since 2026-07-09.

**Cite:** ConductScience CS-958343, Spec v1, 2026-07-09. [conductscience.com/lab/social-operant](https://conductscience.com/lab/social-operant)

INFO@CONDUCTSCIENCE.COM    CONDUCTSCIENCE.COM

CS-958343 · DATASH