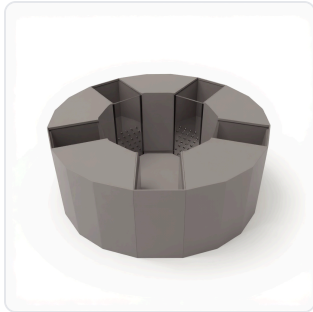


DATASHEET · BEHAVIORAL MAZES

Sociobox.

SKU ME-31001/31002 Spec v1 Rev. 2026-06-23

DATASHEET · P
ME-31001/3
 Rev 2026



PRODUCT FAMILY
 ANIMAL MODEL
 APPLICATION
 COUNTRY OF ORIGIN
 MFG. STANDARD
 LOT TRACEABLE **No**
 VERIFIED **Spec v1 · 2026-06-23**

PRODUCT SPECIFICATIONS

FROM PUBLISHED PROD

| | | | |
|-----------------------------|----------------------------|------------------------------|---|
| PRODUCT TYPE | variable | CENTRAL_ARENA_DIAMETER | 34 cm to 46 cm |
| OUTER_RING_DIAMETER | 56 cm to 75 cm | NUMBER_OF_INSERTS | 5 |
| INSERT_DIMENSIONS_SMALL | 8.5 cm x 11.5 cm x 20.5 cm | INSERT_DIMENSIONS_LARGE | 11 cm x 15 cm x 27 cm |
| HOLES_PER_INSERT | 31 | HOLE_DIAMETER | 0.8 cm to 1 cm |
| CIRCULAR_PARTITION_DIAMETER | 19 cm to 25 cm | CIRCULAR_PARTITION_HEIGHT | 18 cm to 24 cm |
| CIRCULAR_PARTITION_MATERIAL | white plastic | CAMERA_HEIGHT_RECOMMENDED | 130 cm above apparatus |
| LIGHTING_CONDITIONS | 10-15 lux | TEST_SESSION_DURATION | 10 minutes |
| HABITUATION_DURATION | 3 days prior to task | BEHAVIORAL CONSTRUCT | social recognition, social preference, social approach, social investigation, social memory, sociability |
| AUTOMATION LEVEL | semi-automated | MATERIAL | gray acrylic |
| COLOR | gray | RESEARCH DOMAIN | Anxiety and Depression, Behavioral Neuroscience, Pharmacology, Developmental Psychology, Learning and Memory, Neurobiology, Social Behavior |
| SPECIES | Mouse, Rat | COMPATIBLE TRACKING SOFTWARE | ConductVision |
| DIMENSIONS LxWxH (MM) | 43.2 x 38.0 x 27.9 | WEIGHT (KG) | 21.0 |
| AVAILABILITY | In stock | | |

BILL OF MATERIALS · 1 LINE ITEMS

BASE CONF

| QTY | ITEM | SKU |
|-------------------------|--------------------|-------------------------|
| | Scope. Sociobox | ME-31001/31002 |
| INFO@CONDUCTSCIENCE.COM | CONDUCTSCIENCE.COM | ME-31001/31002 · DATASH |

DATASHEET · BEHAVIORAL MAZES

Sociobox.

SKU ME-31001/31002 Spec v1 Rev. 2026-06-23

DATASHEET · P
ME-31001/3
Rev 2026

BILL OF MATERIALS · EXTENDED ATTRIBUTES

| ITEM |
|----------|
| Sociobox |

MATERIALS REFERENCE

0 MATERIAL

| CODE | DESCRIPTION | PROPERTIES | USED IN |
|------|-------------|------------|---------|
|------|-------------|------------|---------|

Cross-reference.

DATASHEET · BEHAVIORAL MAZES

Sociobox.

SKU ME-31001/31002 Spec v1 Rev. 2026-06-23

DATASHEET · P
ME-31001/3
Rev 2026

OPERATING & STERILIZATION ENVELOPES

CONDITIONS, CYCLES, COMI

OPERATING

TEMPERATURE

HUMIDITY

PRESSURE

STORAGE

TEMPERATURE

HUMIDITY

ORIENTATION

STERILIZATION & CLEANING

AUTOCLAVE

GAMMA

AVOID

ETO

WIPE

ANIMAL COMPATIBILITY

BY SPECIES

NOTES

USE & S

| SPECIES | BODY WEIGHT | CHAMBER FIT |
|---------|-------------|-------------|
|---------|-------------|-------------|

Specifications verified against current published product data. Verified 2026-06-23 · Since 2026-06-23.

Cite: ConductScience ME-31001/31002, Spec v1, 2026-06-23. conductscience.com/lab/sociobox

INFO@CONDUCTSCIENCE.COM CONDUCTSCIENCE.COM

ME-31001/31002 · DATASH