

DATASHEET · STEREOTAXIC ACCESSORIES

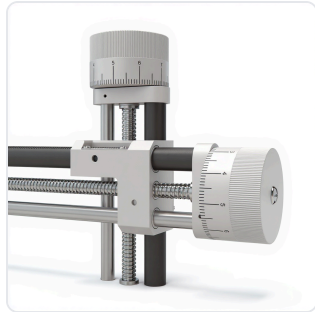
Stereotaxic Arm Upgrade.

SKU RWD-680010 Spec v1 Rev. 2026-06-22

DATASHEET · P

RWD-68

Rev 2026



PRODUCT FAMILY

ANIMAL MODEL

APPLICATION

COUNTRY OF ORIGIN

MFG. STANDARD

LOT TRACEABLE

No

VERIFIED

Spec v1 · 2026-06-22

PRODUCT SPECIFICATIONS

FROM PUBLISHED PROD

AUTOMATION LEVEL	manual	BRAND	RWD
RESEARCH DOMAIN	Anxiety and Depression, Behavioral Pharmacology, Learning and Memory, Motor Function, Neurodegeneration, Neuroscience, Pain Research	SPECIES	Gerbil, Hamster, Rabbit, Mouse, Guinea pig
DIMENSIONS L×W×H (MM)	34.0 × 39.0 × 33.0	WEIGHT (KG)	8.27
AVAILABILITY	In stock		

BILL OF MATERIALS · 1 LINE ITEMS

BASE CONF

QTY	ITEM	SKU
1	Stereotaxic Arm Upgrade	RWD-680010



Scope.

INFO@CONDUCTSCIENCE.COM CONDUCTSCIENCE.COM

RWD-680010 · DATASH

DATASHEET · STEREOTAXIC ACCESSORIES

Stereotaxic Arm Upgrade.

SKU RWD-680010 Spec v1 Rev. 2026-06-22

DATASHEET · P

RWD-68

Rev 2026

BILL OF MATERIALS · EXTENDED ATTRIBUTES

ITEM

Stereotaxic Arm Upgrade

MATERIALS REFERENCE

0 MATERIAL

CODE

DESCRIPTION

PROPERTIES

USED IN

Cross-reference.

DATASHEET · STEREOTAXIC ACCESSORIES

Stereotaxic Arm Upgrade.

SKU RWD-680010 Spec v1 Rev. 2026-06-22

DATASHEET · P

RWD-68

Rev 2026

OPERATING & STERILIZATION ENVELOPES

CONDITIONS, CYCLES, COMI

OPERATING

TEMPERATURE

HUMIDITY

PRESSURE

STORAGE

TEMPERATURE

HUMIDITY

ORIENTATION

STERILIZATION & CLEANING

AUTOCLAVE

GAMMA

AVOID

ETO

WIPE

ANIMAL COMPATIBILITY

BY SPECIES

NOTES

USE & S

SPECIES	BODY WEIGHT	CHAMBER FIT
---------	-------------	-------------

Specifications verified against current published product data. Verified 2026-06-22 · Since 2026-06-22.

Cite: ConductScience RWD-680010, Spec v1, 2026-06-22. conductscience.com/lab/stereotaxic-arm-upgrade

INFO@CONDUCTSCIENCE.COM CONDUCTSCIENCE.COM

RWD-680010 · DATASH