

DATASHEET · BEHAVIORAL MAZES

Whisker Guided Exploration.

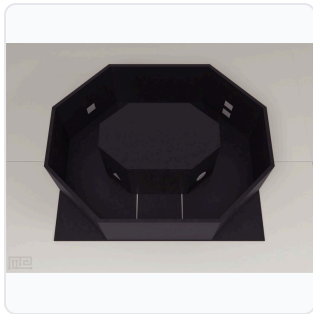
SKU CS-958368 Spec v1 Rev. 2026-07-10

DATASHEET · P

CS-95

Rev 2026

PREVIEW — FIELDS F



PRODUCT FAMILY	
ANIMAL MODEL	
APPLICATION	
COUNTRY OF ORIGIN	
MFG. STANDARD	
LOT TRACEABLE	No
VERIFIED	Spec v1 · 2026-07-10

PRODUCT SPECIFICATIONS

FROM PUBLISHED PROD

PRODUCT TYPE	variable	TRACK_WIDTH	25 cm
STRAIGHT_SECTION_LENGTH	50 cm OUTER	STRAIGHT_SECTION_LENGTH	30 cm INNER
CORNER_OUTER_WALL_LENGTH	30 cm	CORNER_INNER_WALL_LENGTH	10 cm
WALL_HEIGHT	30 cm	WALL_COLOR	Black with white geometric shapes
ACCLIMATION_TIME	5 minutes	EXPLORATION_TIME	10 minutes
TRACK_SHAPE	Oval	SPECIES	Mouse, Rat
COLOR	Black, White	DIMENSIONS	100 cm x 80 cm
COMPATIBLE TRACKING SOFTWARE	ConductVision	DIMENSIONS LxWxH (MM)	65.0 x 36.0 x 27.0
WEIGHT (KG)	6.06	AVAILABILITY	In stock

BILL OF MATERIALS · 1 LINE ITEMS

BASE CONF

QTY	ITEM	SKU
1	Whisker Guided Exploration	CS-958368

Scope.

INFO@CONDUCTSCIENCE.COM CONDUCTSCIENCE.COM

CS-958368 · DATASH

DATASHEET · BEHAVIORAL MAZES

Whisker Guided Exploration.

SKU CS-958368 Spec v1 Rev. 2026-07-10

DATASHEET · P

CS-95

Rev 2026

PREVIEW — FIELDS F

BILL OF MATERIALS · EXTENDED ATTRIBUTES

ITEM

Whisker Guided Exploration

MATERIALS REFERENCE

0 MATERIAL

CODE

DESCRIPTION

PROPERTIES

USED IN

Cross-reference.

DATASHEET · BEHAVIORAL MAZES

Whisker Guided Exploration.

SKU CS-958368 Spec v1 Rev. 2026-07-10

DATASHEET · P

CS-95

Rev 2026

PREVIEW — FIELDS F

OPERATING & STERILIZATION ENVELOPES

CONDITIONS, CYCLES, COM

OPERATING

TEMPERATURE

HUMIDITY

PRESSURE

STORAGE

TEMPERATURE

HUMIDITY

ORIENTATION

STERILIZATION & CLEANING

AUTOCLAVE

GAMMA

AVOID

ETO

WIPE

ANIMAL COMPATIBILITY

BY SPECIES

NOTES

USE & S

SPECIES	BODY WEIGHT	CHAMBER FIT
---------	-------------	-------------

Specifications verified against current published product data. Verified 2026-07-10 · Since 2026-07-10.

Cite: ConductScience CS-958368, Spec v1, 2026-07-10. conductscience.com/lab/whisker-guided-exploration

INFO@CONDUCTSCIENCE.COM CONDUCTSCIENCE.COM

CS-958368 · DATASH