

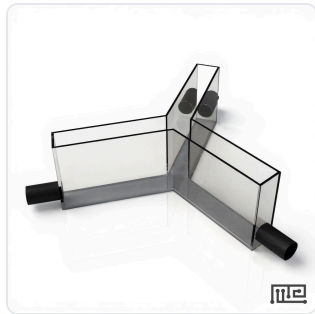
DATASHEET · BEHAVIORAL MAZES

# Y Maze Escape Tubes.

SKU 3505 Spec v1 Rev. 2026-07-09

DATASHEET · P

Rev 2026



PRODUCT FAMILY	
ANIMAL MODEL	
APPLICATION	
COUNTRY OF ORIGIN	
MFG. STANDARD	
LOT TRACEABLE	No
VERIFIED	Spec v1 · 2026-07-09

PRODUCT SPECIFICATIONS

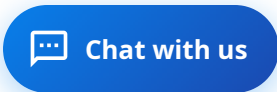
FROM PUBLISHED PROD

PRODUCT TYPE	variable	SIZE	Mouse, Rat
BEHAVIORAL CONSTRUCT	Spatial working memory, Spontaneous alternation, Choice behavior, Exploration patterns, Decision-making, Cognitive flexibility	AUTOMATION LEVEL	manual
RESEARCH DOMAIN	Addiction Research, Aging Research, Anxiety and Depression, Behavioral Pharmacology, Learning and Memory, Neurodegeneration, Neuroscience	SPECIES	Mouse, Rat
COMPATIBLE TRACKING SOFTWARE	ConductVision	DIMENSIONS LxWxH (MM)	60.0 × 60.0 × 30.0
WEIGHT (KG)	17.64	AVAILABILITY	In stock

BILL OF MATERIALS · 1 LINE ITEMS

BASE CONF

QTY	ITEM	SKU
1	Y Maze Escape Tubes	3505



---

**Scope.**

[INFO@CONDUCTSCIENCE.COM](mailto:INFO@CONDUCTSCIENCE.COM)   [CONDUCTSCIENCE.COM](http://CONDUCTSCIENCE.COM)

3505 · DATASH

DATASHEET · BEHAVIORAL MAZES

# Y Maze Escape Tubes.

SKU 3505 Spec v1 Rev. 2026-07-09

DATASHEET · P

Rev 2026

## BILL OF MATERIALS · EXTENDED ATTRIBUTES

ITEM

Y Maze Escape Tubes

## MATERIALS REFERENCE

0 MATERIAL

CODE

DESCRIPTION

PROPERTIES

USED IN

Cross-reference.



DATASHEET · BEHAVIORAL MAZES

# Y Maze Escape Tubes.

SKU 3505 Spec v1 Rev. 2026-07-09

DATASHEET · P

Rev 2026

## OPERATING & STERILIZATION ENVELOPES

CONDITIONS, CYCLES, COMI

### OPERATING

TEMPERATURE

HUMIDITY

PRESSURE

### STORAGE

TEMPERATURE

HUMIDITY

ORIENTATION

### STERILIZATION & CLEANING

AUTOCLAVE

GAMMA

AVOID

ETO

WIPE

## ANIMAL COMPATIBILITY

BY SPECIES

## NOTES

USE & S

SPECIES	BODY WEIGHT	CHAMBER FIT
---------	-------------	-------------

Specifications verified against current published product data. Verified 2026-07-09 · Since 2026-07-09.

**Cite:** ConductScience 3505, Spec v1, 2026-07-09. [conductscience.com/lab/y-maze-escape-tubes](https://conductscience.com/lab/y-maze-escape-tubes)