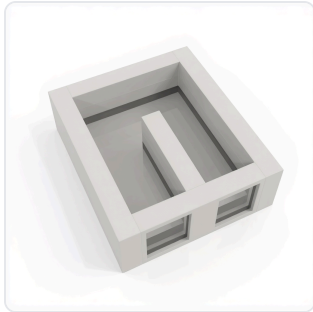


DATASHEET · BEHAVIORAL MAZES

Zebrafish 3 Chamber Social Behavior.

SKU ME-4859 Spec v1 Rev. 2026-06-30

DATASHEET · P
ME-
Rev 2026



PRODUCT FAMILY
ANIMAL MODEL
APPLICATION
COUNTRY OF ORIGIN
MFG. STANDARD
LOT TRACEABLE **No**
VERIFIED **Spec v1 · 2026-06-30**

PRODUCT SPECIFICATIONS

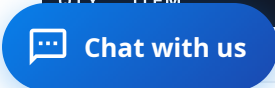
FROM PUBLISHED PROD

CHAMBER_SHAPE	U-shaped	WALL_THICKNESS	5 mm
FLOOR_THICKNESS	5.5 mm	ARM_LENGTH	4 cm
ARM_WIDTH	3.2 cm	VIEWING_CHAMBER_AREA	1.5 cm ²
PASSAGE_WIDTH	6 mm	NUMBER_OF_CHAMBERS	3
OPTIONAL_DIVIDERS	transparent and opaque	LIGHT_TIGHT_ENCLOSURE	optional
BEHAVIORAL_CONSTRUCT	Social preference, Social interaction, Exploratory behavior, Choice behavior, Spatial preference	AUTOMATION_LEVEL	manual
MATERIAL	glass, opaque white acrylic, transparent acrylic	COLOR	White
SPECIES	Zebrafish	DISPLAY_TYPE	None
DIMENSIONS	4 cm x 3.2 cm	RESEARCH_DOMAIN	Behavioral Pharmacology, Developmental Biology, Learning Memory, Neuroscience, Social Behavior, Toxicology
COMPATIBLE_TRACKING_SOFTWARE	ConductVision	DIMENSIONS LxWxH (MM)	43.2 × 38.0 × 27.9
WEIGHT (KG)	21.0	AVAILABILITY	In stock

BILL OF MATERIALS · 1 LINE ITEMS

BASE CONF

QTY	ITEM	SKU
	Zebrafish 3 Chamber Social Behavior	ME-4859



Scope.

INFO@CONDUCTSCIENCE.COM CONDUCTSCIENCE.COM

ME-4859 · DATASH

DATASHEET · BEHAVIORAL MAZES

Zebrafish 3 Chamber Social Behavior.

SKU ME-4859 Spec v1 Rev. 2026-06-30

DATASHEET · P

ME-

Rev 2026

BILL OF MATERIALS · EXTENDED ATTRIBUTES

ITEM

Zebrafish 3 Chamber Social Behavior

MATERIALS REFERENCE

0 MATERIAL

CODE

DESCRIPTION

PROPERTIES

USED IN

Cross-reference.

DATASHEET · BEHAVIORAL MAZES

Zebrafish 3 Chamber Social Behavior.

SKU ME-4859 Spec v1 Rev. 2026-06-30

DATASHEET · P

ME-

Rev 2026

OPERATING & STERILIZATION ENVELOPES

CONDITIONS, CYCLES, COMI

OPERATING

TEMPERATURE

HUMIDITY

PRESSURE

STORAGE

TEMPERATURE

HUMIDITY

ORIENTATION

STERILIZATION & CLEANING

AUTOCLAVE

GAMMA

AVOID

ETO

WIPE

ANIMAL COMPATIBILITY

BY SPECIES

NOTES

USE & S

SPECIES	BODY WEIGHT	CHAMBER FIT
---------	-------------	-------------

Specifications verified against current published product data. Verified 2026-06-30 · Since 2026-06-30.

Cite: ConductScience ME-4859, Spec v1, 2026-06-30. conductscience.com/lab/zebrafish-3-chamber-social-behavior

INFO@CONDUCTSCIENCE.COM CONDUCTSCIENCE.COM

ME-4859 · DATASH