

DATASHEET · NEUROSCIENCE & SURGERY

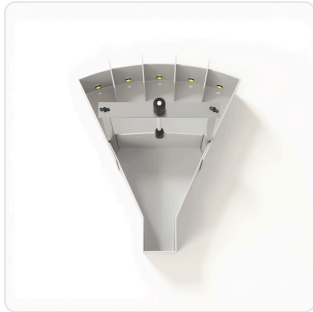
Zebrafish 5 Choice.

SKU ME-4871 Spec v1 Rev. 2026-07-06

DATASHEET · P

ME

Rev 2026



PRODUCT FAMILY
 ANIMAL MODEL
 APPLICATION
 COUNTRY OF ORIGIN
 MFG. STANDARD
 LOT TRACEABLE **No**
 VERIFIED **Spec v1 · 2026-07-06**

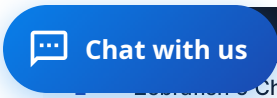
PRODUCT SPECIFICATIONS

FROM PUBLISHED PROD

LENGTH	36cm	NUMBER_OF_APERTURES	5
APERTURE_CUE_LIGHT_COLORS	white, red, green, blue	FIBER_OPTIC_CABLES	5 waterproof cables
PELLET_DISPENSER_ROTATION	360°	FOOD_DELIVERY_DISTANCE_FROM_GATE	21cm
STIMULUS_AREA_DISTANCE_FROM_GATE	15cm	STIMULUS_SLOTS	5 slots with dividers
CURVED_LAYOUT	Yes	AUTOMATED_DOOR	Yes
CONTROL_BOX_FEATURES	Power, status indicators, USB connector, fiber optic connections	WATERPROOF_CABLES	Yes
BEHAVIORAL_CONSTRUCT	Attention, Impulsivity, Executive Function, Reaction Time, Decision Making, Visual Discrimination, Cognitive Flexibility	AUTOMATION_LEVEL	fully-automated
MATERIAL	Acrylic, Opaque acrylic	SPECIES	Zebrafish
DIMENSIONS	42cm x 49cm x 15cm	RESEARCH_DOMAIN	Anxiety and Depression, Behavioral Pharmacology, Developmental Learning and Memory, Neurodegeneration, Neuroscience
DIMENSIONS LxWxH (MM)	43.2 x 38.0 x 27.9	WEIGHT (KG)	21.0
AVAILABILITY	In stock		

BILL OF MATERIALS · 1 LINE ITEMS

BASE CONF



SKU

Zebrafish 5 Choice

ME-4871

Scope.

INFO@CONDUCTSCIENCE.COM CONDUCTSCIENCE.COM

ME-4871 · DATASH

DATASHEET · NEUROSCIENCE & SURGERY

Zebrafish 5 Choice.

SKU ME-4871 Spec v1 Rev. 2026-07-06

DATASHEET · P

ME

Rev 2026

BILL OF MATERIALS · EXTENDED ATTRIBUTES

ITEM

Zebrafish 5 Choice

MATERIALS REFERENCE

0 MATERIAL

CODE

DESCRIPTION

PROPERTIES

USED IN

Cross-reference.

DATASHEET · NEUROSCIENCE & SURGERY

Zebrafish 5 Choice.

SKU ME-4871 Spec v1 Rev. 2026-07-06

DATASHEET · P

ME

Rev 2026

OPERATING & STERILIZATION ENVELOPES

CONDITIONS, CYCLES, COMI

OPERATING

TEMPERATURE

HUMIDITY

PRESSURE

STORAGE

TEMPERATURE

HUMIDITY

ORIENTATION

STERILIZATION & CLEANING

AUTOCLAVE

GAMMA

AVOID

ETO

WIPE

ANIMAL COMPATIBILITY

BY SPECIES

NOTES

USE & S

SPECIES	BODY WEIGHT	CHAMBER FIT
---------	-------------	-------------

Specifications verified against current published product data. Verified 2026-07-06 · Since 2026-07-06.

Cite: ConductScience ME-4871, Spec v1, 2026-07-06. conductscience.com/lab/zebrafish-5-choice

INFO@CONDUCTSCIENCE.COM CONDUCTSCIENCE.COM

ME-4871 · DATASH