

DATASHEET · BEHAVIORAL MAZES

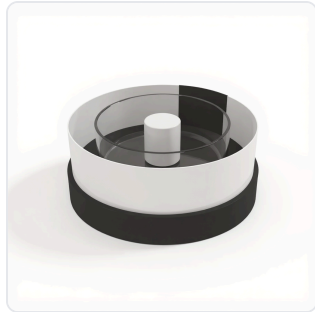
# Zebrafish Rotation Test.

SKU ME-4848 Spec v1 Rev. 2026-07-09

DATASHEET · P

**ME-**

Rev 2026



PRODUCT FAMILY  
 ANIMAL MODEL  
 APPLICATION  
 COUNTRY OF ORIGIN  
 MFG. STANDARD  
 LOT TRACEABLE **No**  
 VERIFIED **Spec v1 · 2026-07-09**

PRODUCT SPECIFICATIONS

FROM PUBLISHED PROD

CONTAINER_DIAMETER	approximately 10 cm	CENTRAL_POST_DIAMETER	approximately 3 cm
BLACK_STRIPE_DIMENSIONS	5x5 cm	LIGHT_ADAPTATION_INTENSITY	approximately 3.25x10 <sup>3</sup> μW/cm <sup>2</sup>
LIGHT_ADAPTATION_DURATION	about 20 minutes	DARK_ADAPTATION_DURATION	approximately 2 minutes
INITIAL_LIGHT_INTENSITY	log I = -3.0	LIGHT_INTENSITY_INCREMENT	0.5 log units
COMPATIBLE_SOFTWARE	Noldus Ethovision XT	INTEGRATIONS	['Neuralynx', 'Ethovision', 'SMS', 'Email']
BEHAVIORAL_CONSTRUCT	optomotor response, escape behavior, visual sensitivity, predator avoidance, visual-motor coordination	AUTOMATION LEVEL	semi-automated
MATERIAL	Acrylic, transparent, white paper	COLOR	Black, White
SPEED/RPM	10	SPECIES	Zebrafish
RESEARCH DOMAIN	Developmental Biology, Neuroscience	COMPATIBLE TRACKING SOFTWARE	ConductVision
DIMENSIONS LxWxH (MM)	43.2 x 38.0 x 27.9	WEIGHT (KG)	21.0
AVAILABILITY	In stock		

BILL OF MATERIALS · 1 LINE ITEMS

BASE CONF

QTY	ITEM	SKU
1	Zebrafish Rotation Test	ME-4848



---

**Scope.**

INFO@CONDUCTSCIENCE.COM    CONDUCTSCIENCE.COM

ME-4848 · DATASH

DATASHEET · BEHAVIORAL MAZES

# Zebrafish Rotation Test.

SKU ME-4848 Spec v1 Rev. 2026-07-09

DATASHEET · P

**ME-**

Rev 2026

## BILL OF MATERIALS · EXTENDED ATTRIBUTES

ITEM

Zebrafish Rotation Test

## MATERIALS REFERENCE

0 MATERIAL

CODE

DESCRIPTION

PROPERTIES

USED IN

Cross-reference.



DATASHEET · BEHAVIORAL MAZES

# Zebrafish Rotation Test.

SKU ME-4848 Spec v1 Rev. 2026-07-09

DATASHEET · P

**ME-**

Rev 2026

## OPERATING & STERILIZATION ENVELOPES

CONDITIONS, CYCLES, COMI

### OPERATING

TEMPERATURE

HUMIDITY

PRESSURE

### STORAGE

TEMPERATURE

HUMIDITY

ORIENTATION

### STERILIZATION & CLEANING

AUTOCLAVE

GAMMA

AVOID

ETO

WIPE

## ANIMAL COMPATIBILITY

BY SPECIES

## NOTES

USE & S

SPECIES	BODY WEIGHT	CHAMBER FIT
---------	-------------	-------------

Specifications verified against current published product data. Verified 2026-07-09 · Since 2026-07-09.

**Cite:** ConductScience ME-4848, Spec v1, 2026-07-09. [conductscience.com/lab/zebrafish-rotation-test](https://conductscience.com/lab/zebrafish-rotation-test)

INFO@CONDUCTSCIENCE.COM    CONDUCTSCIENCE.COM

ME-4848 · DATASH