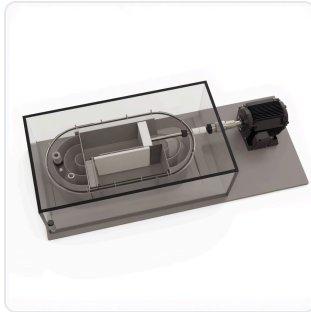


DATASHEET · BEHAVIORAL MAZES

Zebrafish Swim Tunnel.

SKU ME-4878 Spec v1 Rev. 2026-06-26

DATASHEET · P
ME
Rev 2026



PRODUCT FAMILY
ANIMAL MODEL
APPLICATION
COUNTRY OF ORIGIN
MFG. STANDARD
LOT TRACEABLE **No**
VERIFIED **Spec v1 · 2026-06-26**

PRODUCT SPECIFICATIONS

FROM PUBLISHED PROD

FLOW_VELOCITY_RANGE	4-35 cm/s	TANK_SHAPE	rectangular
TEST_SECTION_SHAPE	tunnel-shaped	TANK_TRANSPARENCY	clear
TEST_SECTION_TRANSPARENCY	transparent	PROPELLER_CONTROL	electronic controller
BEHAVIORAL CONSTRUCT	Swimming Performance, Exercise Capacity, Motor Endurance	AUTOMATION LEVEL	semi-automated
CAPACITY	10 liter	SPECIES	Zebrafish
MOTOR_TYPE	AC motor	DIMENSIONS	30 cm x 10 cm x 10 cm
RESEARCH DOMAIN	Aging Research, Cardiovascular, Developmental Biology, Metabolic Research, Motor Function, Toxicology	COMPATIBLE TRACKING SOFTWARE	ConductVision
DIMENSIONS LxWxH (MM)	43.2 x 38.0 x 27.9	WEIGHT (KG)	21.0
AVAILABILITY	In stock		

BILL OF MATERIALS · 1 LINE ITEMS

BASE CONF

QTY	ITEM	SKU
1	Zebrafish Swim Tunnel	ME-4878



Scope.

INFO@CONDUCTSCIENCE.COM CONDUCTSCIENCE.COM

ME-4878 · DATASH

DATASHEET · BEHAVIORAL MAZES

Zebrafish Swim Tunnel.

SKU ME-4878 Spec v1 Rev. 2026-06-26

DATASHEET · P

ME

Rev 2026

BILL OF MATERIALS · EXTENDED ATTRIBUTES

ITEM

Zebrafish Swim Tunnel

MATERIALS REFERENCE

0 MATERIAL

CODE

DESCRIPTION

PROPERTIES

USED IN

Cross-reference.

DATASHEET · BEHAVIORAL MAZES

Zebrafish Swim Tunnel.

SKU ME-4878 Spec v1 Rev. 2026-06-26

DATASHEET · P

ME

Rev 2026

OPERATING & STERILIZATION ENVELOPES

CONDITIONS, CYCLES, COMI

OPERATING

TEMPERATURE

HUMIDITY

PRESSURE

STORAGE

TEMPERATURE

HUMIDITY

ORIENTATION

STERILIZATION & CLEANING

AUTOCLAVE

GAMMA

AVOID

ETO

WIPE

ANIMAL COMPATIBILITY

BY SPECIES

NOTES

USE & S

SPECIES	BODY WEIGHT	CHAMBER FIT
---------	-------------	-------------

Specifications verified against current published product data. Verified 2026-06-26 · Since 2026-06-26.

Cite: ConductScience ME-4878, Spec v1, 2026-06-26. conductscience.com/lab/zebrafish-swim-tunnel

INFO@CONDUCTSCIENCE.COM CONDUCTSCIENCE.COM

ME-4878 · DATASH